

4

3

2

1

**NOTES:**

1. THE INFORMATION PROVIDED IN HTIS DOCUMENT IS INTENDED FOR INFORMATIONAL PURPOSES ONLY AND IS SUBJECT TO CHANGE WITHOUT NOTICE
2. WEIGHT SHOWN IS APPROXIMATE AND DOES NOT INCLUDE WELD, WIRE ROPE, HARDWARE AND MISCELLANEOUS PARTS.
3. HOSE HANDLING CONFIGURATION IS AVAILABLE.

(2) SWING GEARBOXES

R37 3/4 TAILSWING

CONTROL VALVES

TWG 859 MAIN WINCH

ANTI-TWO BLOCK

101 1/4

35 7/8

7 X 40 CYLINDER

17

20" MANWAY

Ø30 WITH 1/2" WALL

64 7/8

780 1/16

LOAD BLOCK  
2 PART LINE  
(SINGLE PART LINE AVAILABLE)

INFORMATION CONTAINED HEREON IS  
CONFIDENTIAL AND TRADE SECRET  
DO NOT DISCLOSE, USE OR REPRODUCE  
WITHOUT PRIOR WRITTEN APPROVAL  
FROM TECHCRANE INTERNATIONAL LLC.

UNLESS OTHERWISE SPECIFIED  
ALL DIMENSIONS ARE IN INCHES  
[] INDICATES MILLIMETERS

**TOLERANCES**

FRACTIONAL DIMENSIONS  $\pm \frac{1}{16}$  0  
SURFACE FINISHES 125V

DESIGNED BY:

F. SHAD

DRAWN BY:

aguidry

WEIGHT:

10799 lbmass

APPROVED BY:

SEE APPROVAL STAMP

FILE NAME:

C:\10000\SERIES F10-65\PRODUCTION DRAWINGS\MODEL CAPTIVE MODEL F10-65 BASE MODEL.dwg

MATERIAL NOTES:

1. BURN PER DIMENSIONS SHOWN.
2. PLATE FLATNESS AFTER BURNING TO BE WITHIN ASTM SPECIFICATIONS.
3. REFER TO API SPEC 2C LATEST EDITION.
4. WHERE APPLICABLE - ROLL FORM PER DIMENSIONS SHOWN.
5. WHERE APPLICABLE - TACK WELD AS REQUIRED TO SECURE ROLLED CAN.

DESIGN STATE:

Released

MATERIAL:

**TECHCRANE INTERNATIONAL, LLC.**

17639 HARD HAT DRIVE COVINGTON, LA. 70435 U.S.A.  
PHONE (985) 871-0056 FAX (985) 871-0065

**F10-65 GENERAL ARRANGEMENT**

DATE:

12/29/2015

REVISION NO.:

3.0

CO NO.:

SHEET 1 OF 2

PART/DWG. NO.:

**PRESENTATION**

4

3

2

1

4

3

2

1

D

D

C

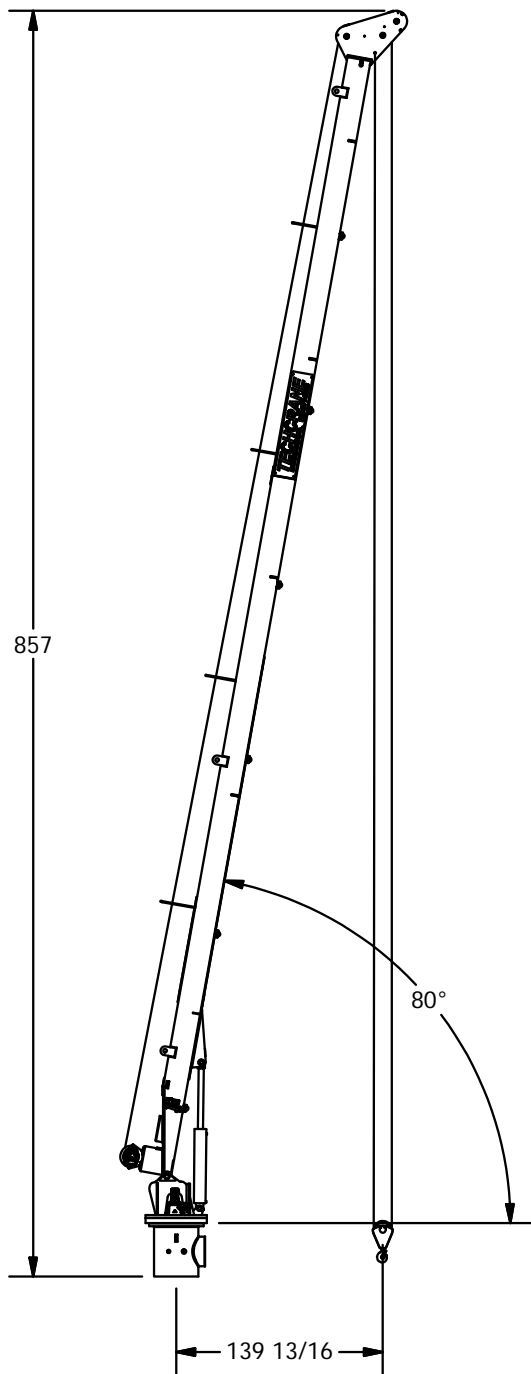
C

B

B

A

A



# BOOM UP VIEW

INFORMATION CONTAINED HEREON IS  
CONFIDENTIAL AND TRADE SECRET  
DO NOT DISCLOSE, USE OR REPRODUCE  
WITHOUT PRIOR WRITTEN APPROVAL  
FROM TECHCRANE INTERNATIONAL LLC.

UNLESS OTHERWISE SPECIFIED  
ALL DIMENSIONS ARE IN INCHES  
[] INDICATES MILLIMETERS

## TOLERANCES

FRACTIONAL DIMENSIONS  $\pm \frac{1}{16}$  / -0  
SURFACE FINISHES 125√

DESIGNED BY:

F. SHAD

DRAWN BY:

aguidry

WEIGHT:

10799 lbmass

APPROVED BY:

SEE APPROVAL STAMP

FILE NAME:

c:\10000\series\branch4 - PRODUCTION DRAWINGS - MODEL CAPTIVE MODEL F10-65 BASE MODEL.dwg

MATERIAL NOTES:

1. BURN PER DIMENSIONS SHOWN.
2. PLATE FLATNESS AFTER BURNING TO BE WITHIN ASTM SPECIFICATIONS.
3. REFER TO API SPEC 2C LATEST EDITION.
4. WHERE APPLICABLE - ROLL FORM PER DIMENSIONS SHOWN.
5. WHERE APPLICABLE - TACK WELD AS REQUIRED TO SECURE ROLLED CAN.

DESIGN STATE:

Released

MATERIAL:



**TECHCRANE INTERNATIONAL, LLC.**

17639 HARD HAT DRIVE COVINGTON, LA. 70435 U.S.A.  
PHONE (985) 871-0056 FAX (985) 871-0065

## **F10-65 GENERAL ARRANGEMENT**

DATE:

12/29/2015

REVISION NO.:

3.0

CO NO.:

SHEET 2 OF 2

PART/DWG. NO.:

**PRESENTATION**

4

3

2

1

A