

4

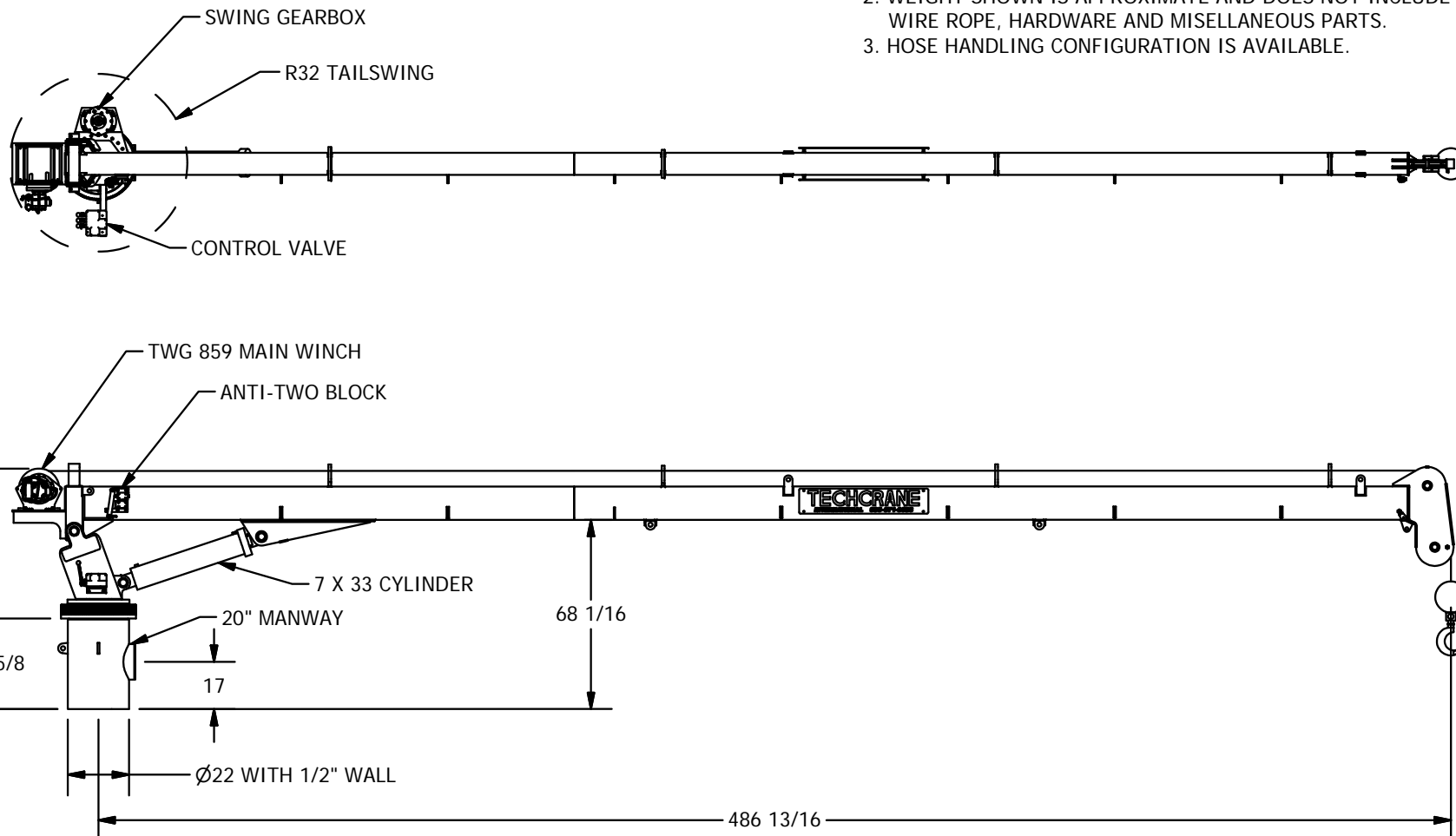
3


2

1

NOTES:

1. THE INFORMATION PROVIDED IN HTIS DOCUMENT IS INTENDED FOR INFORMATIONAL PURPOSES ONLY AND IS SUBJECT TO CHANGE WITHOUT NOTICE
2. WEIGHT SHOWN IS APPROXIMATE AND DOES NOT INCLUDE WELD, WIRE ROPE, HARDWARE AND MISCELLANEOUS PARTS.
3. HOSE HANDLING CONFIGURATION IS AVAILABLE.



INFORMATION CONTAINED HEREON IS CONFIDENTIAL AND TRADE SECRET DO NOT DISCLOSE, USE OR REPRODUCE WITHOUT PRIOR WRITTEN APPROVAL FROM TECHCRANE INTERNATIONAL LLC.	DESIGNED BY: F. SHAD	MATERIAL NOTES: 1. BURN PER DIMENSIONS SHOWN. 2. PLATE FLATNESS AFTER BURNING TO BE WITHIN ASTM SPECIFICATIONS. 3. REFER TO API SPEC 2C LATEST EDITION 4. WHERE APPLICABLE - ROLL FORM PER DIMENSIONS SHOWN. 5. WHERE APPLICABLE - TACK WELD AS REQUIRED TO SECURE ROLLED CAN.	<div>TECHCRANE</div> TECHCRANE INTERNATIONAL, LLC. 17639 HARD HAT DRIVE COVINGTON, LA. 70435 U.S.A. PHONE (985) 871-0056 FAX (985) 871-0065		
	DRAWN BY: aguidry				
	WEIGHT: 4710 lbmass		F7-40 GENERAL ARRANGEMENT		
	APPROVED BY: SEE APPROVAL STAMP				
UNLESS OTHERWISE SPECIFIED ALL DIMENSIONS ARE IN INCHES [] INDICATES MILLIMETERS <u>TOLERANCES</u> FRACTIONAL DIMENSIONS $\pm \frac{1}{16}$ / -0 SURFACE FINISHES 125√	FILE NAME: C:\1567-SERIES CRANES-A-PRODUCTION DRAWINGS-S-MODEL GANTRY-40 BASE MODEL.dwg	MATERIAL:	DATE: 12/29/2015	REVISION NO.: 3.0	CO NO.:
SHEET 1 OF 2					

PRESENTATION

4

3

2

1

4

3

2

1

D

D

C

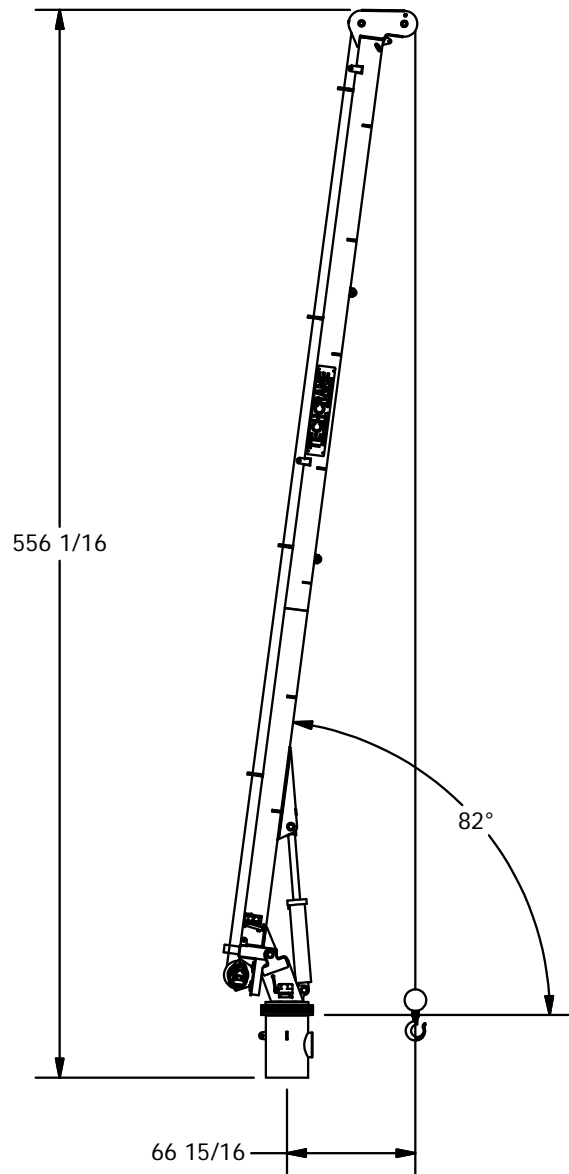
C

B

B

A

A

BOOM UP VIEW

PART/DWG. NO.:

PRESENTATION

INFORMATION CONTAINED HEREON IS
CONFIDENTIAL AND TRADE SECRET
DO NOT DISCLOSE, USE OR REPRODUCE
WITHOUT PRIOR WRITTEN APPROVAL
FROM TECHCRANE INTERNATIONAL LLC.

UNLESS OTHERWISE SPECIFIED
ALL DIMENSIONS ARE IN INCHES
[] INDICATES MILLIMETERS

TOLERANCES

FRACTIONAL DIMENSIONS $+\frac{1}{16}/-0$
SURFACE FINISHES 125√

DESIGNED BY:

F. SHAD

DRAWN BY:

aguidry

WEIGHT:

4710 lbmass

APPROVED BY:

SEE APPROVAL STAMP

FILE NAME:

C:\1567-SERIES CRANES-A- PRODUCTION DRAWINGS- MODEL GAH717-40 BASE MODEL.dwg

MATERIAL NOTES:

1. BURN PER DIMENSIONS SHOWN.
2. PLATE FLATNESS AFTER BURNING TO BE WITHIN ASTM SPECIFICATIONS.
3. REFER TO API SPEC 2C LATEST EDITION.
4. WHERE APPLICABLE - ROLL FORM PER DIMENSIONS SHOWN.
5. WHERE APPLICABLE - TACK WELD AS REQUIRED TO SECURE ROLLED CAN.

DESIGN STATE:

Released

MATERIAL:



TECHCRANE INTERNATIONAL, LLC.

17639 HARD HAT DRIVE COVINGTON, LA. 70435 U.S.A.
PHONE (985) 871-0056 FAX (985) 871-0065

F7-40 GENERAL ARRANGEMENT

DATE:

12/29/2015

REVISION NO.:

3.0

CO NO.:

SHEET 2 OF 2