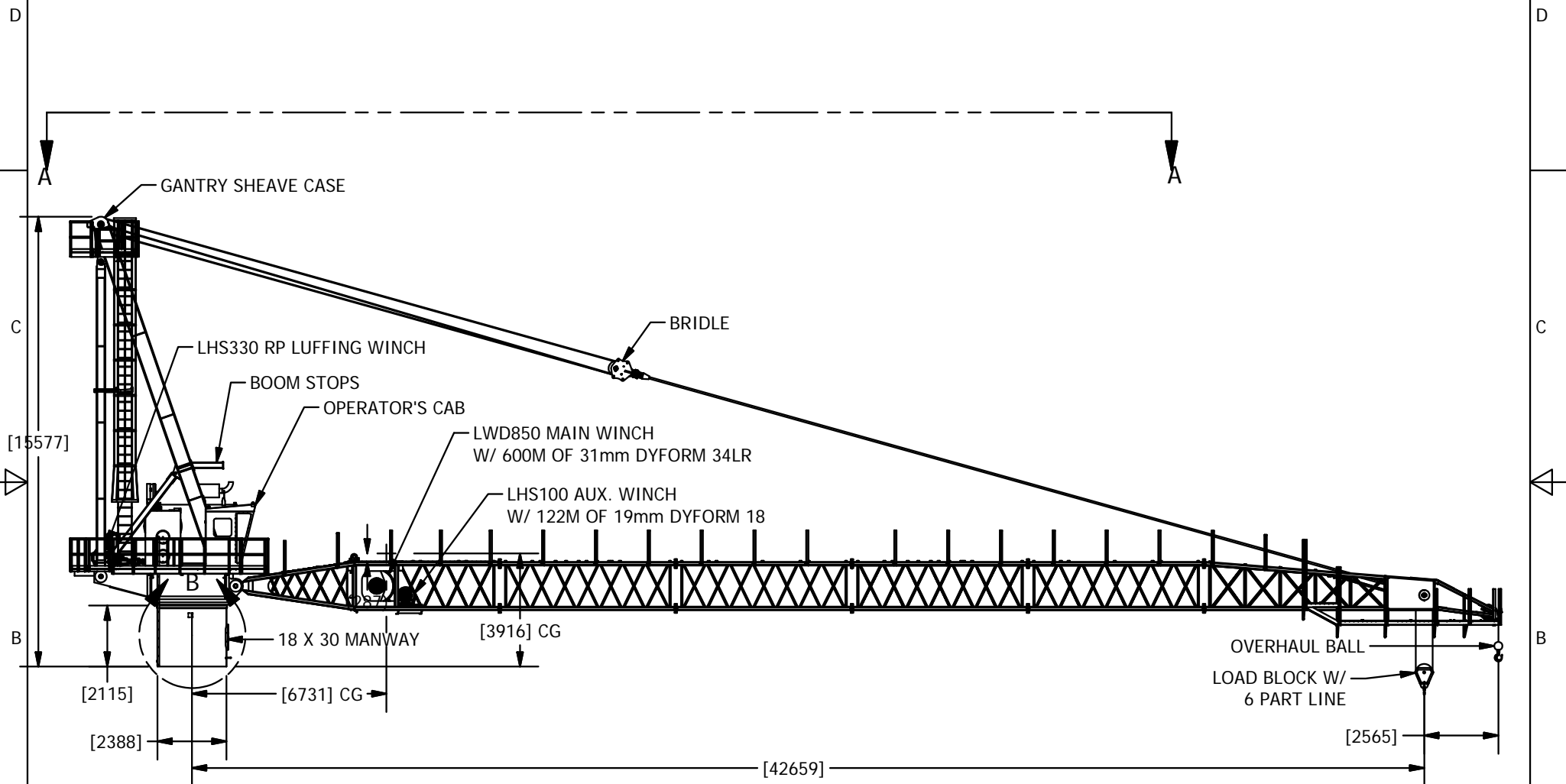




INSTALLATION TYPE: BOTTOM SUPPORTED STRUCTURE APPLICATION

DESIGN SERVICE TEMPERATURE: +6°F

CRANE ACCESS LADDER CUSTOMER TO TRIM TO FIT



INFORMATION CONTAINED HEREON IS
CONFIDENTIAL AND TRADE SECRET
DO NOT DISCLOSE, USE OR REPRODUCE
WITHOUT PRIOR WRITTEN APPROVAL
FROM TECHCRANE INTERNATIONAL LLC.

UNLESS OTHERWISE SPECIFIED
ALL DIMENSIONS ARE IN INCHES
[] INDICATES MILLIMETERS

TOLERANCES

FRACTIONAL DIMENSIONS $\pm \frac{1}{16}$ / 0
SURFACE FINISHES 125V

DESIGNED BY:

F. SHAD

DRAWN BY:

L. BAYLIS

WEIGHT:

148790 lbmass

APPROVED BY:

FILE NAME:

0200 - SERIES 20000 - PRODUCTION DRAWINGS - MODEL GALZ00-1400-140 GENERAL ARRANGEMENT.dwg

MATERIAL NOTES:

1. BURN PER DIMENSIONS SHOWN.
2. PLATE FLATNESS AFTER BURNING TO BE WITHIN ASTM SPECIFICATIONS.
3. REFER TO API SPEC 2C LATEST EDITION.
4. WHERE APPLICABLE - ROLL FORM PER DIMENSIONS SHOWN.
5. WHERE APPLICABLE - TACK WELD AS REQUIRED TO SECURE ROLLED CAN.

DESIGN STATE:

WorkInProgress

MATERIAL:



TECHCRANE INTERNATIONAL, LLC.

17639 HARD HAT DRIVE COVINGTON, LA. 70435 U.S.A.
PHONE (985) 871-0056 FAX (985) 871-0065

L200-140 GENERAL ARRANGEMENT

DATE:

9/26/2016

REVISION NO.:

3.0

PART/DWG. NO.:

L0200-140-GA

SHEET 1 OF 4

4

3

2

1

D

D

C

C

B

B

A

A

C15 CAT ENGINE

[Ø10580]

OPERATOR'S CAB

CRANE ACCESS LADDER

VIEW A-A

INFORMATION CONTAINED HEREON IS
CONFIDENTIAL AND TRADE SECRET
DO NOT DISCLOSE, USE OR REPRODUCE
WITHOUT PRIOR WRITTEN APPROVAL
FROM TECHCRANE INTERNATIONAL LLC.

UNLESS OTHERWISE SPECIFIED
ALL DIMENSIONS ARE IN INCHES
[] INDICATES MILLIMETERS

TOLERANCES

FRACTIONAL DIMENSIONS $\pm \frac{1}{16}$ / -0
SURFACE FINISHES 125√

DESIGNED BY:

F. SHAD

DRAWN BY:

L. BAYLIS

WEIGHT:

148790 lbm_{mass}

APPROVED BY:

FILE NAME:

C:\000 - SERIES 200000 - PRODUCTION DRAWINGS - MODEL CALZADA-HOLZAPFEL-140 GENERAL ARRANGEMENT.dwg

MATERIAL NOTES:

1. BURN PER DIMENSIONS SHOWN.
2. PLATE FLATNESS AFTER BURNING TO BE WITHIN ASTM SPECIFICATIONS.
3. REFER TO API SPEC 2C LATEST EDITION.
4. WHERE APPLICABLE - ROLL FORM PER DIMENSIONS SHOWN.
5. WHERE APPLICABLE - TACK WELD AS REQUIRED TO SECURE ROLLED CAN.

DESIGN STATE:

WorkInProgress

MATERIAL:

**TECHCRANE INTERNATIONAL, LLC.**

17639 HARD HAT DRIVE COVINGTON, LA. 70435 U.S.A.
PHONE (985) 871-0056 FAX (985) 871-0065

L200-140 GENERAL ARRANGEMENT

DATE:

9/26/2016

REVISION NO.:

3.0

SHEET 2 OF 4

PART/DWG. NO.:

L0200-140-GA

4

3

2

1

4

3

2

1

D

D

C

C

B

B

A

A

BOOM UP VIEW

[45978]

80.5°

[8616]

[1224]

PART/DWG. NO.:

L0200-140-GA

INFORMATION CONTAINED HEREON IS
CONFIDENTIAL AND TRADE SECRET
DO NOT DISCLOSE, USE OR REPRODUCE
WITHOUT PRIOR WRITTEN APPROVAL
FROM TECHCRANE INTERNATIONAL LLC.

UNLESS OTHERWISE SPECIFIED
ALL DIMENSIONS ARE IN INCHES
[] INDICATES MILLIMETERS

TOLERANCES

FRACTIONAL DIMENSIONS $\pm \frac{1}{16}$ / -0
SURFACE FINISHES 125√

DESIGNED BY:

F. SHAD

DRAWN BY:

L. BAYLIS

WEIGHT:

148790 lbmass

APPROVED BY:

FILE NAME:

C:\000 - SERIES 200000 - PRODUCTION DRAWINGS - MODEL GALZ00-140L200-140 GENERAL ARRANGEMENT.dwg

MATERIAL NOTES:

1. BURN PER DIMENSIONS SHOWN.
2. PLATE FLATNESS AFTER BURNING TO BE WITHIN ASTM SPECIFICATIONS.
3. REFER TO API SPEC 2C LATEST EDITION.
4. WHERE APPLICABLE - ROLL FORM PER DIMENSIONS SHOWN.
5. WHERE APPLICABLE - TACK WELD AS REQUIRED TO SECURE ROLLED CAN.

DESIGN STATE:

WorkInProgress

MATERIAL:

**TECHCRANE INTERNATIONAL, LLC.**

17639 HARD HAT DRIVE COVINGTON, LA. 70435 U.S.A.
PHONE (985) 871-0056 FAX (985) 871-0065

L200-140 GENERAL ARRANGEMENT

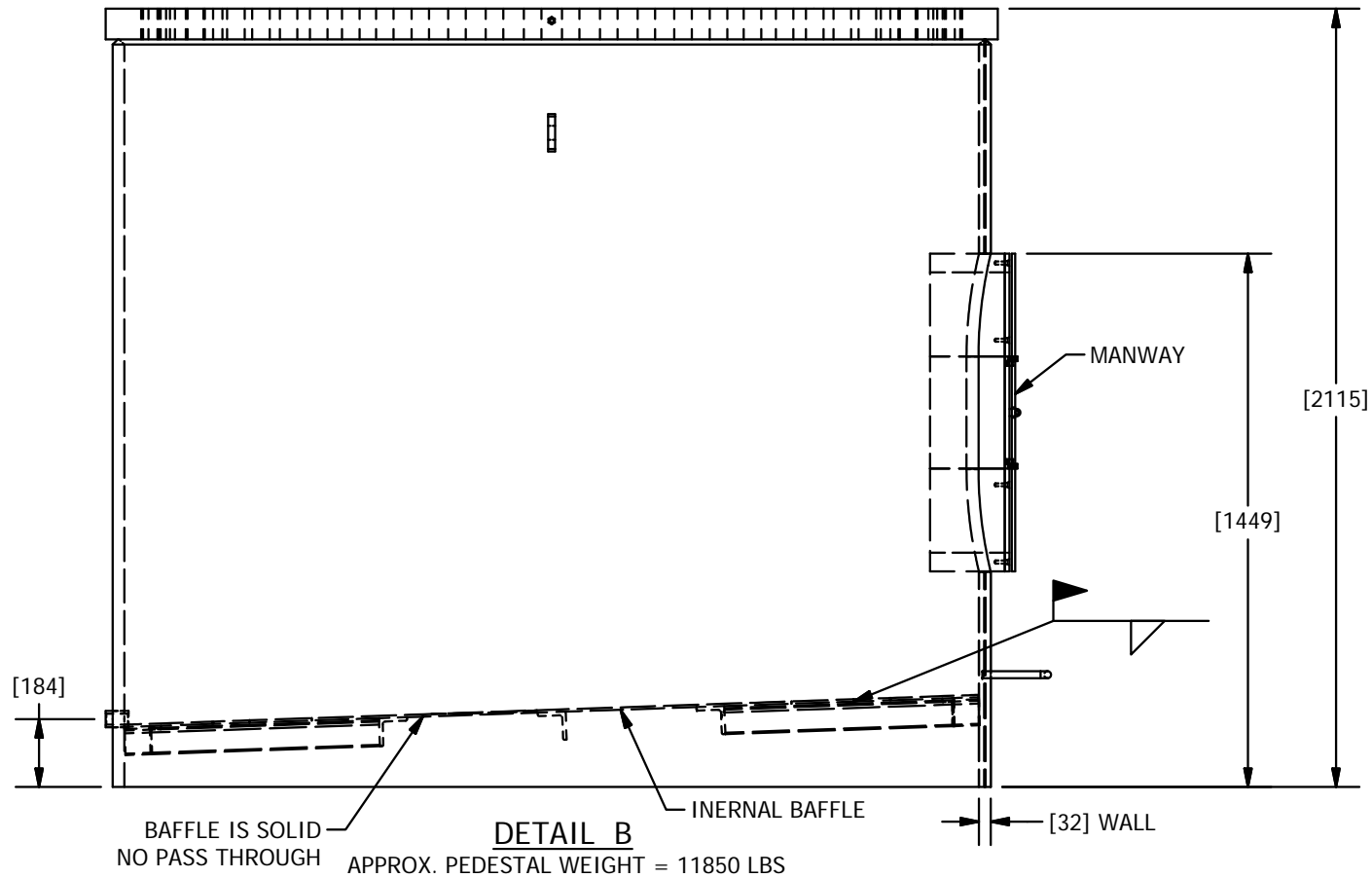
DATE:

9/26/2016

REVISION NO.:

3.0

SHEET 3 OF 4



BAFFLE IS SOLID
NO PASS THROUGH

DETAIL B
APPROX. PEDESTAL WEIGHT = 11850 LBS

INFORMATION CONTAINED HEREON IS
CONFIDENTIAL AND TRADE SECRET
DO NOT DISCLOSE, USE OR REPRODUCE
WITHOUT PRIOR WRITTEN APPROVAL
FROM TECHCRANE INTERNATIONAL LLC.

UNLESS OTHERWISE SPECIFIED
ALL DIMENSIONS ARE IN INCHES
[] INDICATES MILLIMETERS

TOLERANCES

FRACTIONAL DIMENSIONS $+\frac{1}{16}/-0$
SURFACE FINISHES 125 \sqrt

DESIGNED BY:

F. SHAD

DRAWN BY:

L. BAYLIS

WEIGHT:

148790 lbmass

APPROVED BY:

FILE NAME:

01-200 - SERIES CRANES 4 - PRODUCTION DRAWINGS 5 - MODEL G4L200-140L200-140 GENERAL ARRANGEMENT 1

MATERIAL NOTES:

1. BURN PER DIMENSIONS SHOWN.
2. PLATE FLATNESS AFTER BURNING TO BE WITHIN ASTM SPECIFICATIONS.
3. REFER TO API SPEC 2C LATEST EDITION.
4. WHERE APPLICABLE - ROLL FORM PER DIMENSIONS SHOWN.
5. WHERE APPLICABLE - TACK WELD AS REQUIRED TO SECURE ROLLED CAN.

DESIGN STATE:	
---------------	--

WorkInProgress

	MATERIAL:
--	-----------



TECHCRANE INTERNATIONAL, LLC.

17639 HARD HAT DRIVE COVINGTON, LA. 70435 U.S.A.
PHONE (985) 871-0056 FAX (985) 871-0065

L200-140 GENERAL ARRANGEMENT

DATE:

9/26/2016

REVISION NO.:

3.0

PART/DWG. NO.:

L0200-140-GA

SHEET 4 OF 4