

STARTER PANEL
(2) ESKRIDGE 105
SWING GEARBOXES

R45 9/16 TAILSWING RADIUS

CONTROL VALVES

ROCS SYSTEM
PCL'S

NOTES:

1. INSTALLATION TYPE: BOTTOM SUPPORTED STRUCTURE APPLICATION
2. MIN. DESIGN SERVICE TEMPERATURE: 6°F
3. WEIGHT SHOWN IS APPROXIMATE AND DOES NOT INCLUDE WELD, WIRE ROPE, HARDWARE AND MISCELLANEOUS PARTS.
4. WIRE ROPE, HARDWARE AND MISCELLANEOUS PARTS.
5. DETAILS ON ELECTRICAL SUPPLY FOR MOTORS AND CRANE SENSORS ARE SUPPLIED ON THE DOCUMENT A930-101

TELESCOPIC GEARBOX

155 11/16

TWF 859 WINCH
W/ 300' OF 1/2" DYFORM 18

WIRE ROPE GUIDES

125 3/4

9 7/8

TECHCRANE
INTERNATIONAL, LLC
888-871-6666

(2) 7 X 40 CYLINDERS
W/ SS RODS

APPROX. C.G.

360° CONTINUOUS ROTATION
PROVIDED VIA HYDRAULIC SWIVEL

110 15/16

ANTI-TWO BLOCK

OVERHAUL BALL

81 15/16

40HP
HYDRAULIC POWER UNIT
CLASS 1 DIV 2

30 1/2

96 15/16

34 1/2

413 3/4 RETRACTED

449 3/8 OVERALL

API MAXIMUM OVERTURNING MOMENT (FT-LBS) 780,079
CORRESPONDING AXIAL FORCE (LBS) 42,488
MAXIMUM AXIAL FORCE (LBS) 60,880
CORRESPONDING MOMENT (FT-LBS) 386,213

PART/DWG. NO.:

T0020-034-0060

INFORMATION CONTAINED HEREON IS
CONFIDENTIAL AND TRADE SECRET
DO NOT DISCLOSE, USE OR REPRODUCE
WITHOUT PRIOR WRITTEN APPROVAL
FROM TECHCRANE INTERNATIONAL, LLC.

UNLESS OTHERWISE SPECIFIED
ALL DIMENSIONS ARE IN INCHES
[] INDICATES MILLIMETERS
TOLERANCES

FRACTIONAL DIMENSIONS +1/-0
SURFACE FINISHES 125√

FILE NAME:
C:\WORK\PROJECTS\T0020-034-0060\T0020-034-0060.DWG

DESIGNED BY:
F. SHAD

DRAWN BY:
lbaylis

WEIGHT:
17465 lbmass

APPROVED BY:
SEE APPROVAL STAMP

DESIGN STATE:
WorkInProgress

MATERIAL NOTES:
1. ALL NDE TO BE IN ACCORDANCE AND
CALIBRATED TO AWS D1.1.
2. BURN PER DIMENSIONS SHOWN.
3. PLATE FLATNESS AFTER BURNING TO BE
WITHIN ASTM SPECIFICATIONS.
4. REFER TO API SPEC 2C LATEST EDITION
5. WHERE APPLICABLE - ROLL FORM PER
DIMENSIONS SHOWN.
6. WHERE APPLICABLE - TACK WELD AS
REQUIRED TO SECURE ROLLED CAN.

MATERIAL:



TECHCRANE INTERNATIONAL, LLC.

17639 HARD HAT DRIVE COVINGTON, LA. 70435 U.S.A.
PHONE (985) 871-0056 FAX (985) 871-0065

**12894 GENERAL ARRANGEMENT CHEMTEX
T20-34-60**

DATE:

10/18/2016

REVISION NO.:

3.4

CO NO.:

SHEET 1 OF 4

4

3

2

1

D

D

C

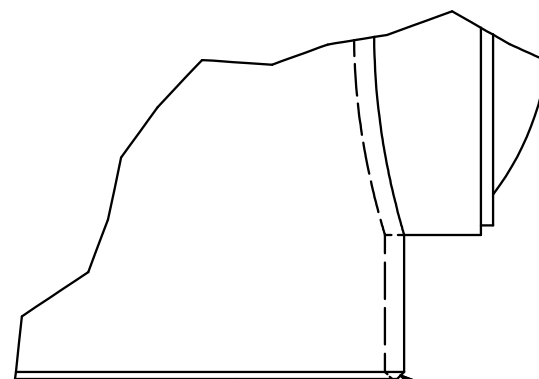
C

B

B

A

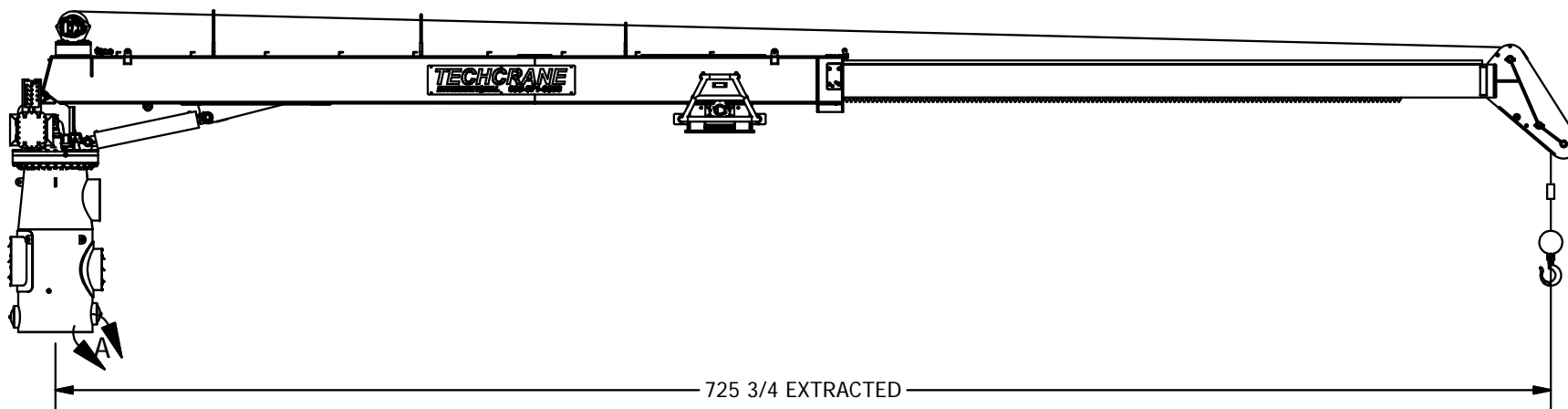
A



1/8 WELD LAND

3/16 X 45° CHAMFER
ALL AROUND INSIDE & OUTSIDE

DETAIL A



PART/DWG. NO.:

T0020-034-0060

INFORMATION CONTAINED HEREON IS
CONFIDENTIAL AND TRADE SECRET
DO NOT DISCLOSE, USE OR REPRODUCE
WITHOUT PRIOR WRITTEN APPROVAL
FROM TECHCRANE INTERNATIONAL LLC.

UNLESS OTHERWISE SPECIFIED
ALL DIMENSIONS ARE IN INCHES
[] INDICATES MILLIMETERS
TOLERANCES

FRACTIONAL DIMENSIONS $+1/16/-0$
SURFACE FINISHES 125√

FILE NAME:
C:\Users\jessie\PROJECTS\2016\T0020-034-0060\12894 GENERAL ARRANGEMENT CHEMTEX T20-34-60.dwg

DESIGNED BY:
F. SHAD

DRAWN BY:
lbaylis

WEIGHT:
17465 lbmass

APPROVED BY:
SEE APPROVAL STAMP

DESIGN STATE:
WorkInProgress

MATERIAL NOTES:
1. ALL NDE TO BE IN ACCORDANCE AND
CALIBRATED TO AWS D1.1.
2. BURN PER DIMENSIONS SHOWN.
3. PLATE FLATNESS AFTER BURNING TO BE
WITHIN ASTM SPECIFICATIONS.
4. REFER TO API SPEC 2C LATEST EDITION
5. WHERE APPLICABLE - ROLL FORM PER
DIMENSIONS SHOWN.
6. WHERE APPLICABLE - TACK WELD AS
REQUIRED TO SECURE ROLLED CAN.

MATERIAL:



TECHCRANE INTERNATIONAL, LLC.

17639 HARD HAT DRIVE COVINGTON, LA. 70435 U.S.A.
PHONE (985) 871-0056 FAX (985) 871-0065

**12894 GENERAL ARRANGEMENT CHEMTEX
T20-34-60**

DATE:
10/18/2016

REVISION NO.:
3.4

CO NO.:

SHEET 2 OF 4

4

3

2

1

A

4

3

2

1

D

D

C

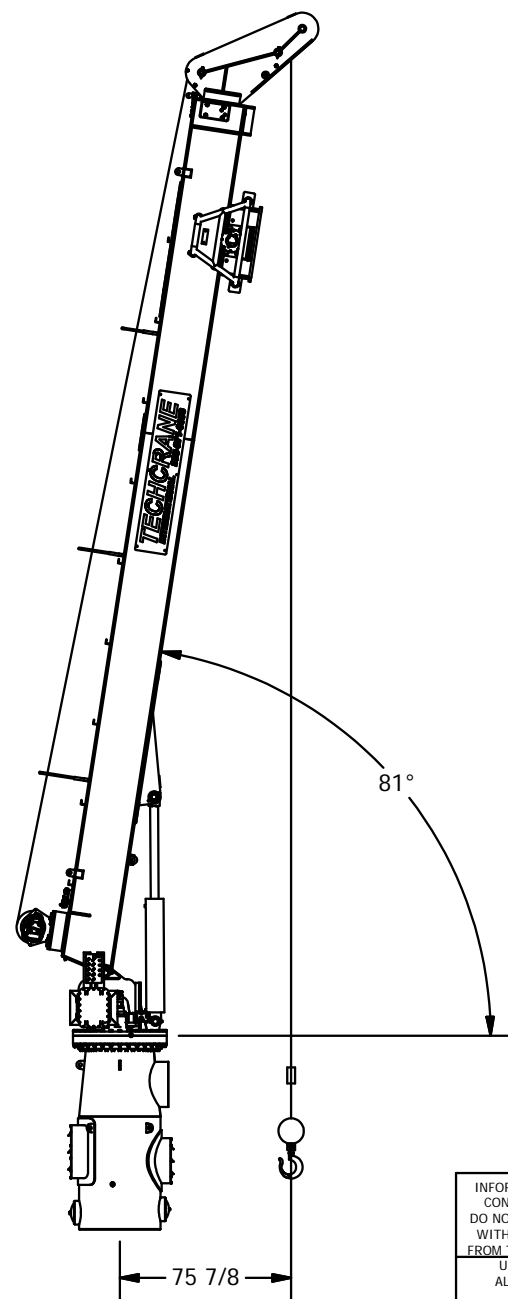
C

B


B

A

A



BOOM UP RETRACTED

INFORMATION CONTAINED HEREON IS CONFIDENTIAL AND TRADE SECRET DO NOT DISCLOSE, USE OR REPRODUCE WITHOUT PRIOR WRITTEN APPROVAL FROM TECHCRANE INTERNATIONAL LLC. UNLESS OTHERWISE SPECIFIED ALL DIMENSIONS ARE IN INCHES [] INDICATES MILLIMETERS TOLERANCES FRACTIONAL DIMENSIONS $+1/32-0$ SURFACE FINISHES 125√ FILE NAME: <small>C:\Users\shad\PROJECTS\12894-GENERAL ARRANGEMENT CHEMTEX\12894-60.dwg</small>	DESIGNED BY: F. SHAD	MATERIAL NOTES: 1. ALL NDE TO BE IN ACCORDANCE AND CALIBRATED TO AWS D1.1. 2. BURN PER DIMENSIONS SHOWN. 3. PLATE FLATNESS AFTER BURNING TO BE WITHIN ASTM SPECIFICATIONS. 4. REFER TO API SPEC 2C LATEST EDITION. 5. WHERE APPLICABLE - ROLL FORM PER DIMENSIONS SHOWN. 6. WHERE APPLICABLE - TACK WELD AS REQUIRED TO SECURE ROLLED CAN. MATERIAL:	 TECHCRANE INTERNATIONAL, LLC. 17639 HARD HAT DRIVE COVINGTON, LA. 70435 U.S.A. PHONE (985) 871-0056 FAX (985) 871-0065
	DRAWN BY: lbaylis		
	WEIGHT: 17465 lbmass		
	APPROVED BY: SEE APPROVAL STAMP		
DESIGN STATE: WorkInProgress	12894 GENERAL ARRANGEMENT CHEMTEX T20-34-60		
	DATE: 10/18/2016	REVISION NO.: 3.4	CO NO.:
SHEET 3 OF 4			

4

3

2

1

4

3

2

1

D

D

C

C

B

B

A

A

BOOM UP EXTRACTED

81°

123 9/16

PART/DWG. NO.:

T0020-034-0060

INFORMATION CONTAINED HEREON IS
CONFIDENTIAL AND TRADE SECRET
DO NOT DISCLOSE, USE OR REPRODUCE
WITHOUT PRIOR WRITTEN APPROVAL
FROM TECHCRANE INTERNATIONAL LLC.

UNLESS OTHERWISE SPECIFIED
ALL DIMENSIONS ARE IN INCHES
[] INDICATES MILLIMETERS
TOLERANCES

FRACTIONAL DIMENSIONS $+1/16/-0$
SURFACE FINISHES 125√

FILE NAME:

C:\na\DESIGN\PROJECTS\034-0060\T0020-034-0060.dwg

DESIGNED BY:

F. SHAD

DRAWN BY:

lbaylis

WEIGHT:

17465 lbmass

APPROVED BY:

SEE APPROVAL STAMP

DESIGN STATE:

WorkInProgress

MATERIAL NOTES:

1. ALL NDE TO BE IN ACCORDANCE AND
CALIBRATED TO AWS D1.1.
2. BURN PER DIMENSIONS SHOWN.
3. PLATE FLATNESS AFTER BURNING TO BE
WITHIN ASTM SPECIFICATIONS.
4. REFER TO API SPEC 2C LATEST EDITION.
5. WHERE APPLICABLE - ROLL FORM PER
DIMENSIONS SHOWN.
6. WHERE APPLICABLE - TACK WELD AS
REQUIRED TO SECURE ROLLED CAN.

MATERIAL:



TECHCRANE INTERNATIONAL, LLC.

17639 HARD HAT DRIVE COVINGTON, LA. 70435 U.S.A.
PHONE (985) 871-0056 FAX (985) 871-0065

**12894 GENERAL ARRANGEMENT CHEMTEX
T20-34-60**

DATE:

10/18/2016

REVISION NO.:

3.4

CO NO.:

SHEET 4 OF 4

4

3

2

1

