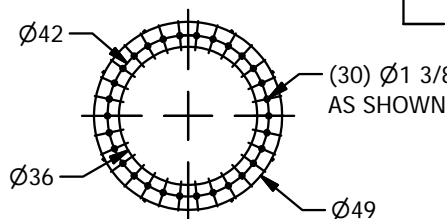
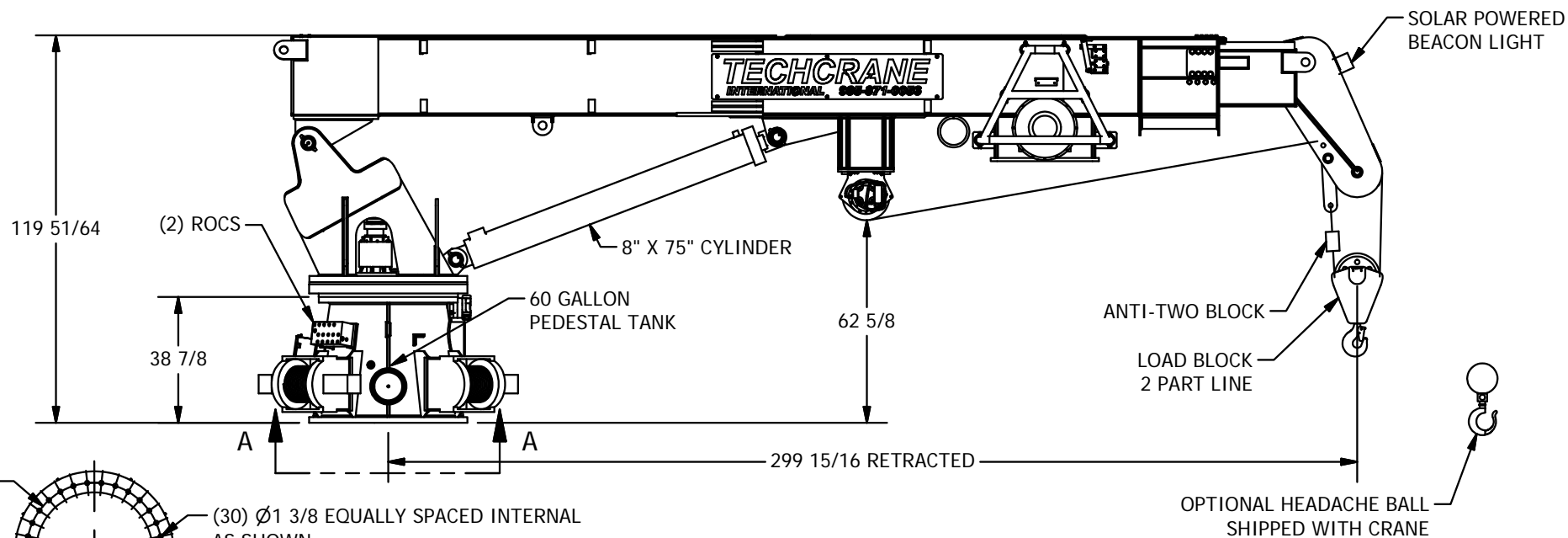
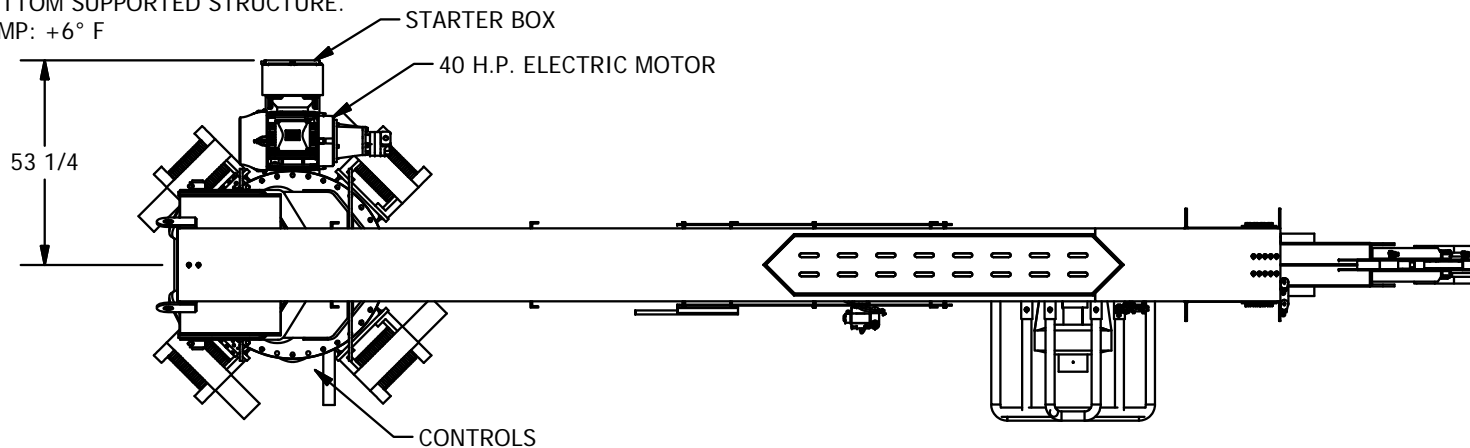


NOTES:

1. THIS CRANE IS A BOTTOM SUPPORTED STRUCTURE.
2. DESIGN SERVICE TEMP: +6° F



VIEW A-A
CUSTOMER BOLT PATTERN

PART/DWG. NO.:

PRESENTATION

INFORMATION CONTAINED HEREON IS
CONFIDENTIAL AND TRADE SECRET
DO NOT DISCLOSE, USE OR REPRODUCE
WITHOUT PRIOR WRITTEN APPROVAL
FROM TECHCRANE INTERNATIONAL LLC.

UNLESS OTHERWISE SPECIFIED
ALL DIMENSIONS ARE IN INCHES
[] INDICATES MILLIMETERS

TOLERANCES

FRACTIONAL DIMENSIONS +1/16/-0
SURFACE FINISHES 125V

DESIGNED BY:
F. SHAD

DRAWN BY:
lbaylis

WEIGHT:
N/A

APPROVED BY:

FILE NAME:
C:\CS-SERIES\BAYLIS-PRODUCTION\DRAWINGS-1\MODELS\T25-40\T25-40-PHOTO-JOB # 12861.dwg

MATERIAL NOTES:
1. BURN PER DIMENSIONS SHOWN.
2. PLATE FLATNESS AFTER BURNING TO BE
WITHIN ASTM SPECIFICATIONS.
3. REFER TO API SPEC 2C LATEST EDITION.
4. WHERE APPLICABLE - ROLL FORM PER
DIMENSIONS SHOWN.
5. WHERE APPLICABLE - TACK WELD AS
REQUIRED TO SECURE ROLLED CAN.

DESIGN STATE:
WorkInProgress

MATERIAL:



TECHCRANE INTERNATIONAL, LLC.

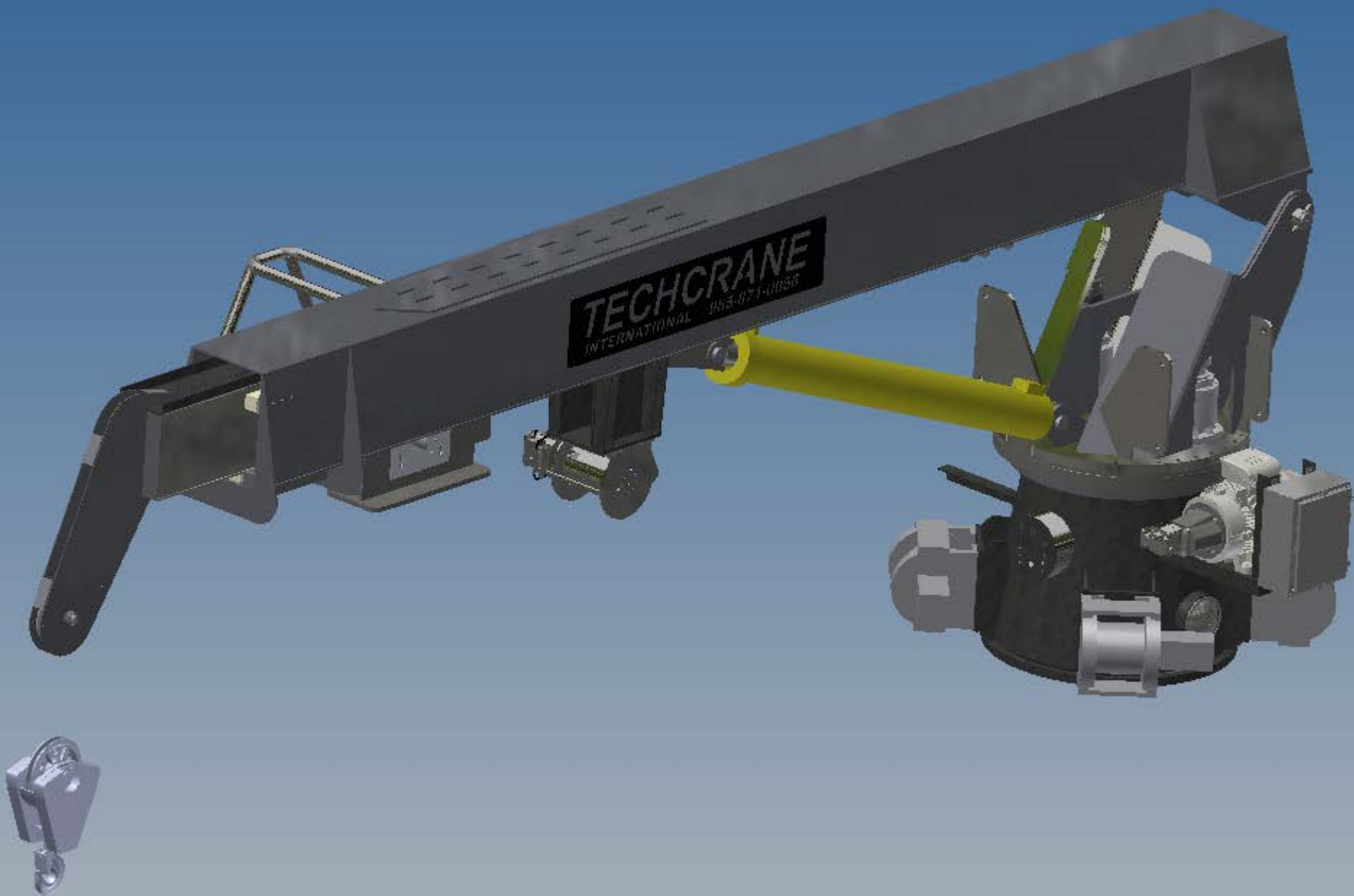
17639 HARD HAT DRIVE COVINGTON, LA. 70435 U.S.A.
PHONE (985) 871-0056 FAX (985) 871-0065

PHOENIX - JOB # 12861
T25-25-40 GENERAL ARRANGEMENT

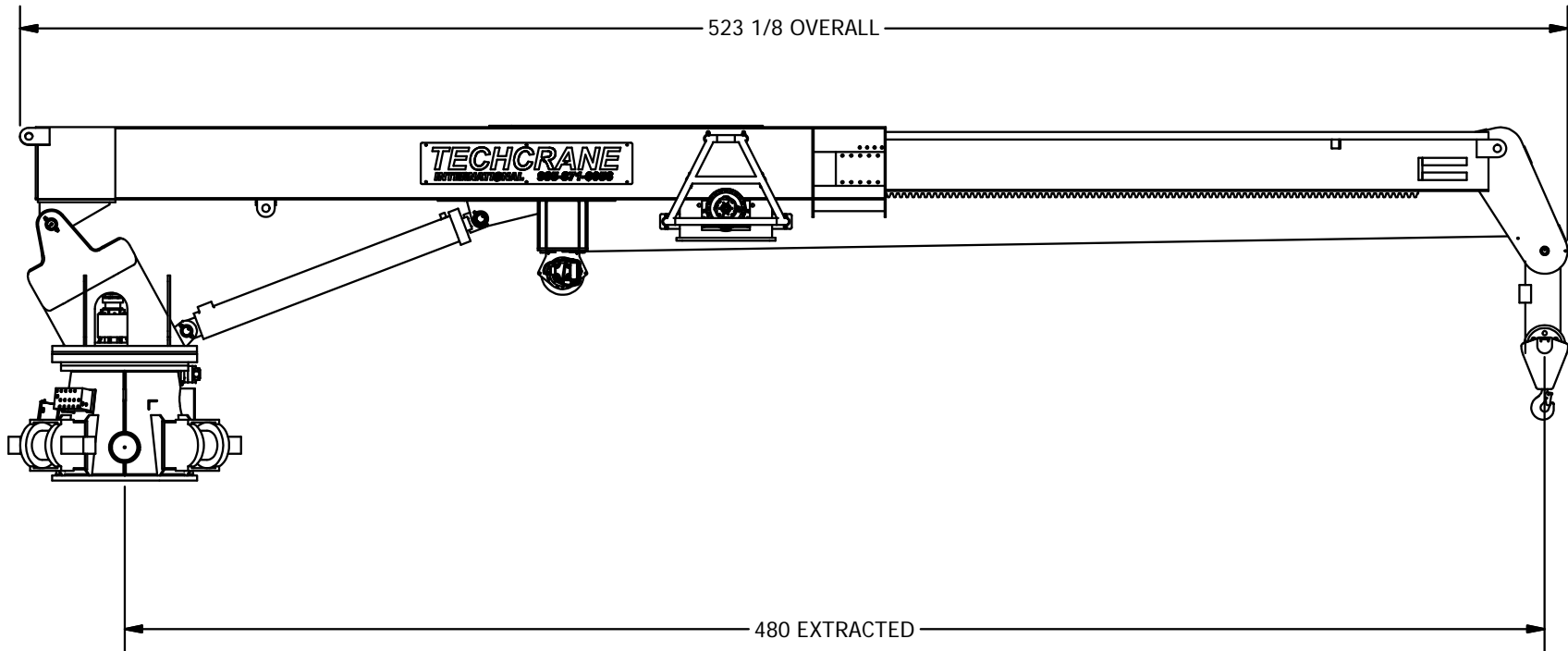
DATE:
2/24/2015

REVISION NO.:
2.1

SHEET 1 OF 4







INFORMATION CONTAINED HEREON IS
CONFIDENTIAL AND TRADE SECRET
DO NOT DISCLOSE, USE OR REPRODUCE
WITHOUT PRIOR WRITTEN APPROVAL
FROM TECHCRANE INTERNATIONAL LLC.

UNLESS OTHERWISE SPECIFIED
ALL DIMENSIONS ARE IN INCHES
[] INDICATES MILLIMETERS

TOLERANCES

FRACTIONAL DIMENSIONS $\pm \frac{1}{16}$ -0
SURFACE FINISHES 125V

DESIGNED BY:

F. SHAD

DRAWN BY:

lbaylis

WEIGHT:

N/A

APPROVED BY:

FILE NAME:

C:\CS-SERIES\BAYES-A-PRODUCTION\DRAWINGS-S-MODEL\BAYES-S-40\BAYES-S-40-PRESENT-JOB # 12861.dwg

MATERIAL NOTES:

1. BURN PER DIMENSIONS SHOWN.
2. PLATE FLATNESS AFTER BURNING TO BE WITHIN ASTM SPECIFICATIONS.
3. REFER TO API SPEC 2C LATEST EDITION.
4. WHERE APPLICABLE - ROLL FORM PER DIMENSIONS SHOWN.
5. WHERE APPLICABLE - TACK WELD AS REQUIRED TO SECURE ROLLED CAN.

DESIGN STATE:

WorkInProgress

MATERIAL:



TECHCRANE INTERNATIONAL, LLC.

17639 HARD HAT DRIVE COVINGTON, LA. 70435 U.S.A.
PHONE (985) 871-0056 FAX (985) 871-0065

PHOENIX - JOB # 12861
T25-25-40 GENERAL ARRANGEMENT

DATE:

2/24/2015

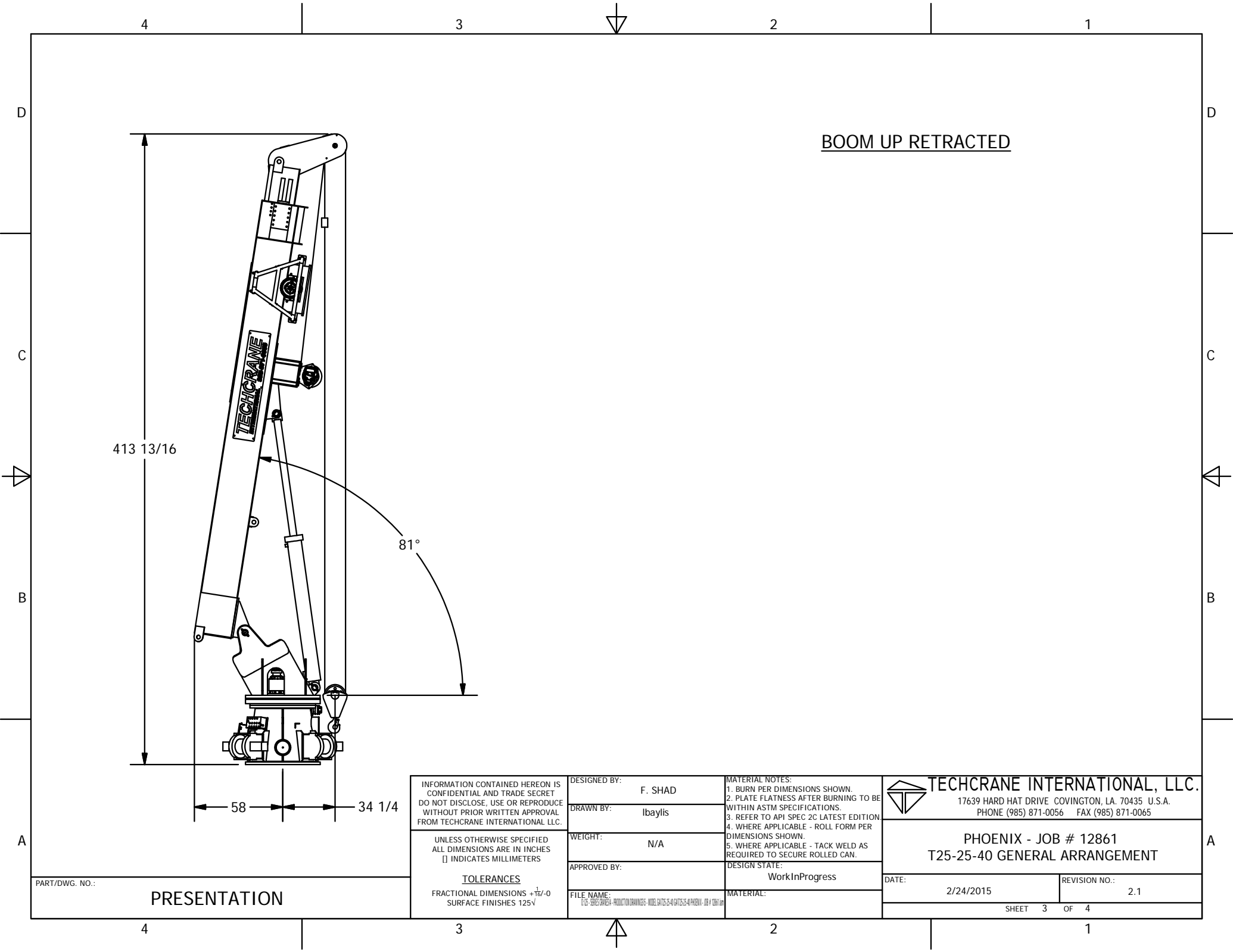
REVISION NO.:

2.1

SHEET 2 OF 4

PART/DWG. NO.:

PRESENTATION



BOOM UP RETRACTED

INFORMATION CONTAINED HEREON IS
CONFIDENTIAL AND TRADE SECRET
DO NOT DISCLOSE, USE OR REPRODUCE
WITHOUT PRIOR WRITTEN APPROVAL
FROM TECHCRANE INTERNATIONAL LLC.

UNLESS OTHERWISE SPECIFIED
ALL DIMENSIONS ARE IN INCHES
[] INDICATES MILLIMETERS

TOLERANCES
FRACTIONAL DIMENSIONS $\pm \frac{1}{16} / -0$
SURFACE FINISHES 125V

DESIGNED BY:
F. SHAD

DRAWN BY:
lbaylis

WEIGHT:
N/A

APPROVED BY:

FILE NAME:
C:\CS - SERIES 25\REV A - PRODUCTION DRAWINGS\CS - MODEL 24\T25-25-40\GENERAL\JOB # 12861.dwg

MATERIAL NOTES:
1. BURN PER DIMENSIONS SHOWN.
2. PLATE FLATNESS AFTER BURNING TO BE
WITHIN ASTM SPECIFICATIONS.
3. REFER TO API SPEC 2C LATEST EDITION.
4. WHERE APPLICABLE - ROLL FORM PER
DIMENSIONS SHOWN.
5. WHERE APPLICABLE - TACK WELD AS
REQUIRED TO SECURE ROLLED CAN.

DESIGN STATE:
WorkInProgress

MATERIAL:



TECHCRANE INTERNATIONAL, LLC.
17639 HARD HAT DRIVE COVINGTON, LA. 70435 U.S.A.
PHONE (985) 871-0056 FAX (985) 871-0065

PHOENIX - JOB # 12861
T25-25-40 GENERAL ARRANGEMENT

DATE:
2/24/2015

REVISION NO.:
2.1

SHEET 3 OF 4

PART/DWG. NO.:

PRESENTATION

4

3

2

1

D

D

C

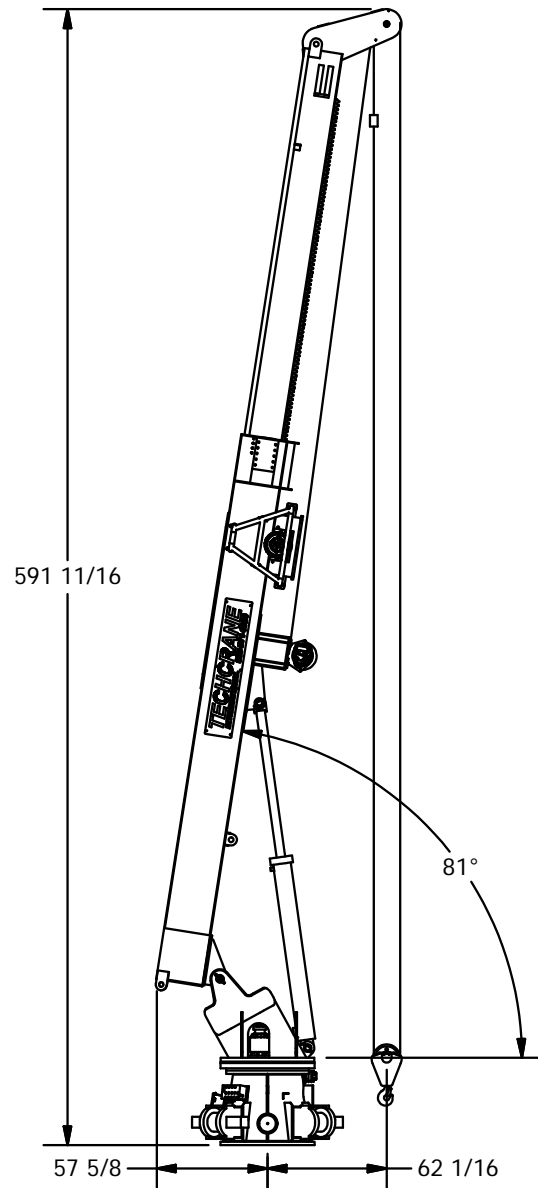
C

B

B

A

A

BOOM UP EXTRACTED

PART/DWG. NO.:

PRESENTATION

INFORMATION CONTAINED HEREON IS
CONFIDENTIAL AND TRADE SECRET
DO NOT DISCLOSE, USE OR REPRODUCE
WITHOUT PRIOR WRITTEN APPROVAL
FROM TECHCRANE INTERNATIONAL LLC.

UNLESS OTHERWISE SPECIFIED
ALL DIMENSIONS ARE IN INCHES
[] INDICATES MILLIMETERS

TOLERANCES

FRACTIONAL DIMENSIONS $\pm \frac{1}{16}$ -0
SURFACE FINISHES 125V

DESIGNED BY:

F. SHAD

DRAWN BY:

lbaylis

WEIGHT:

N/A

APPROVED BY:

FILE NAME:

C:\CS-SERIES\BAYLIS-PRODUCTION\DRAWINGS-S-40\T25-25-40\PRESENT-100-F-12861.dwg

MATERIAL NOTES:

1. BURN PER DIMENSIONS SHOWN.
2. PLATE FLATNESS AFTER BURNING TO BE
WITHIN ASTM SPECIFICATIONS.
3. REFER TO API SPEC 2C LATEST EDITION.
4. WHERE APPLICABLE - ROLL FORM PER
DIMENSIONS SHOWN.
5. WHERE APPLICABLE - TACK WELD AS
REQUIRED TO SECURE ROLLED CAN.

DESIGN STATE:

WorkInProgress

MATERIAL:



TECHCRANE INTERNATIONAL, LLC.

17639 HARD HAT DRIVE COVINGTON, LA. 70435 U.S.A.
PHONE (985) 871-0056 FAX (985) 871-0065

PHOENIX - JOB # 12861
T25-25-40 GENERAL ARRANGEMENT

DATE:

2/24/2015

REVISION NO.:

2.1

SHEET 4 OF 4