

PART/DWG. NO.:

PRESENTATION

INFORMATION CONTAINED HEREON IS
CONFIDENTIAL AND TRADE SECRET
DO NOT DISCLOSE, USE OR REPRODUCE
WITHOUT PRIOR WRITTEN APPROVAL
FROM TECHCRANE INTERNATIONAL LLC.

UNLESS OTHERWISE SPECIFIED
ALL DIMENSIONS ARE IN INCHES
[] INDICATES MILLIMETERS

TOLERANCES

FRACTIONAL DIMENSIONS +1/16/-0
SURFACE FINISHES 125√

DESIGNED BY:

F. SHAD

DRAWN BY:

lbaylis

WEIGHT:

N/A

APPROVED BY:

FILE NAME:

FILED: 2015-04-22 10:05:45 AM; MODEL: T30-25-42; SWIFTSIPS JOB # 12867-12868

MATERIAL NOTES:

1. BURN PER DIMENSIONS SHOWN.
2. PLATE FLATNESS AFTER BURNING TO BE WITHIN ASTM SPECIFICATIONS.
3. REFER TO API SPEC 2C LATEST EDITION.
4. WHERE APPLICABLE - ROLL FORM PER DIMENSIONS SHOWN.
5. WHERE APPLICABLE - TACK WELD AS REQUIRED TO SECURE ROLLED CAN.

DESIGN STATE:

WorkInProgress

MATERIAL:



TECHCRANE INTERNATIONAL, LLC.

17639 HARD HAT DRIVE COVINGTON, LA. 70435 U.S.A.
PHONE (985) 871-0056 FAX (985) 871-0065

T30-25-42 GENERAL ARRANGEMENT
SWIFTSIPS JOB # 12867-12868

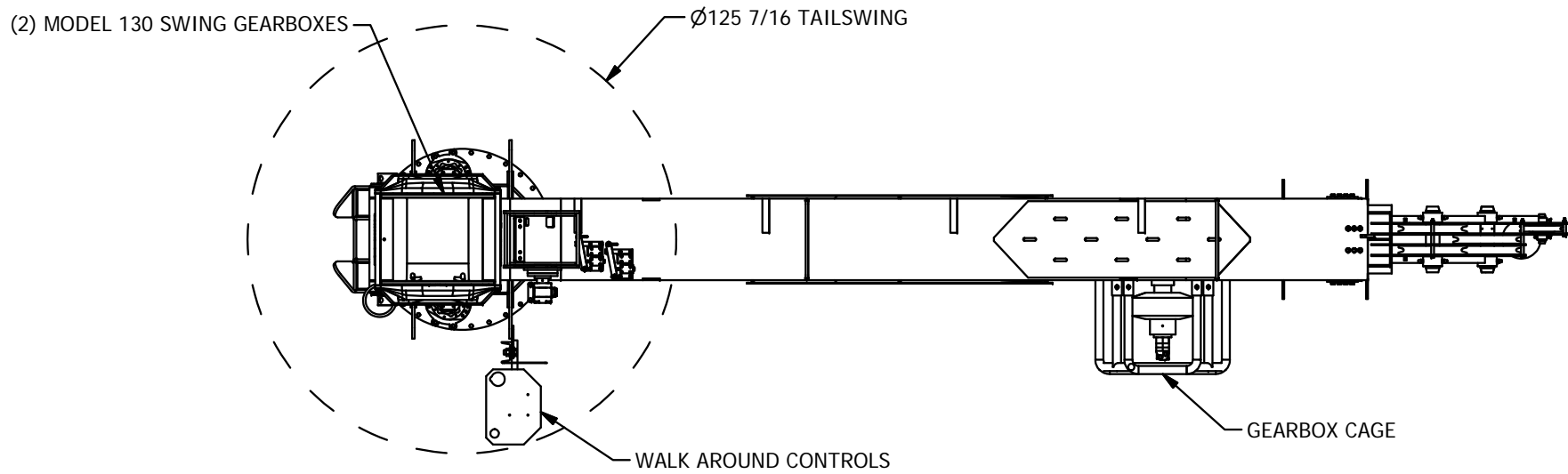
DATE:

4/22/2015

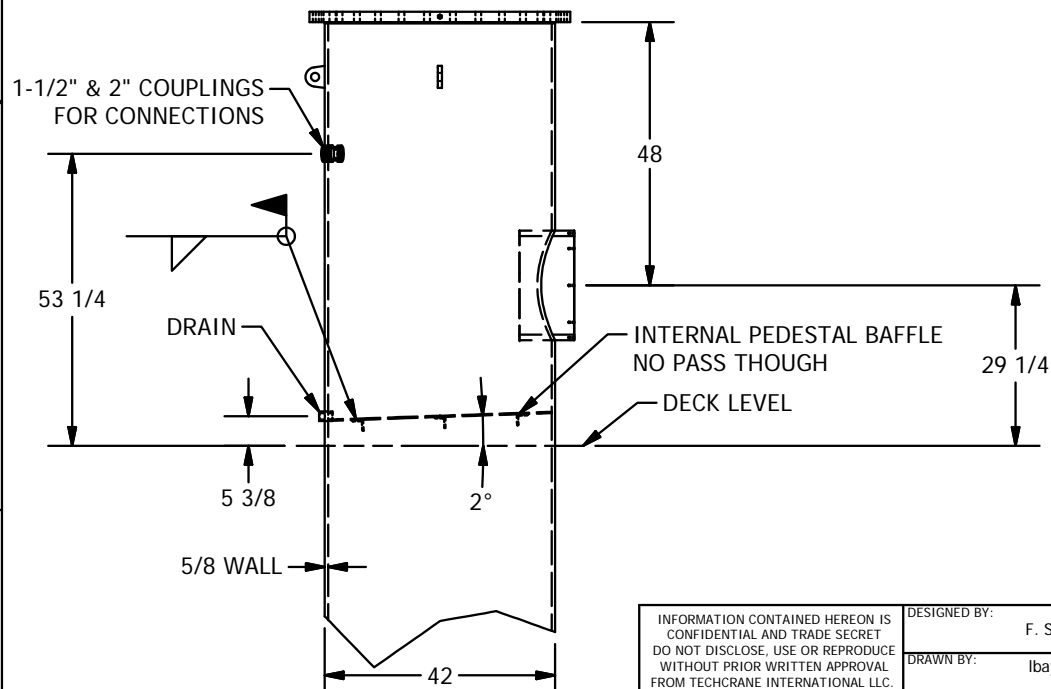
REVISION NO.:

2.2


SHEET 1 OF 6



VIEW A-A



DETAIL B

INFORMATION CONTAINED HEREON IS CONFIDENTIAL AND TRADE SECRET DO NOT DISCLOSE, USE OR REPRODUCE WITHOUT PRIOR WRITTEN APPROVAL FROM TECHCRANE INTERNATIONAL LLC.	DESIGNED BY: F. SHAD	MATERIAL NOTES: 1. BURN PER DIMENSIONS SHOWN. 2. PLATE FLATNESS AFTER BURNING TO BE WITHIN ASTM SPECIFICATIONS. 3. REFER TO API SPEC 2C LATEST EDITION. 4. WHERE APPLICABLE - ROLL FORM PER DIMENSIONS SHOWN. 5. WHERE APPLICABLE - TACK WELD AS REQUIRED TO SECURE ROLLED CAN.	 TECHCRANE INTERNATIONAL, LLC. 17639 HARD HAT DRIVE COVINGTON, LA. 70435 U.S.A. PHONE (985) 871-0056 FAX (985) 871-0065	
	DRAWN BY: lbaylis			
UNLESS OTHERWISE SPECIFIED ALL DIMENSIONS ARE IN INCHES [] INDICATES MILLIMETERS <u>TOLERANCES</u> FRACTIONAL DIMENSIONS $\pm \frac{1}{16}$ / -0 SURFACE FINISHES 125 \sqrt	WEIGHT: N/A	DESIGN STATE: WorkInProgress	T30-25-42 GENERAL ARRANGEMENT SWIFTSIPS JOB # 12867-12868	
	APPROVED BY:			
		FILE NAME: <small>C:\30-25-42\SW-PROD\CONTOUR DRAWINGS - MODEL\GAT\T30-25-42\SW\T30-25-42\SWIFTSIPS.DWG + 12867-12868.dwg</small>	MATERIAL:	DATE: 4/22/2015
SHEET 2 OF 6				

4

3

2

1

D

D

C

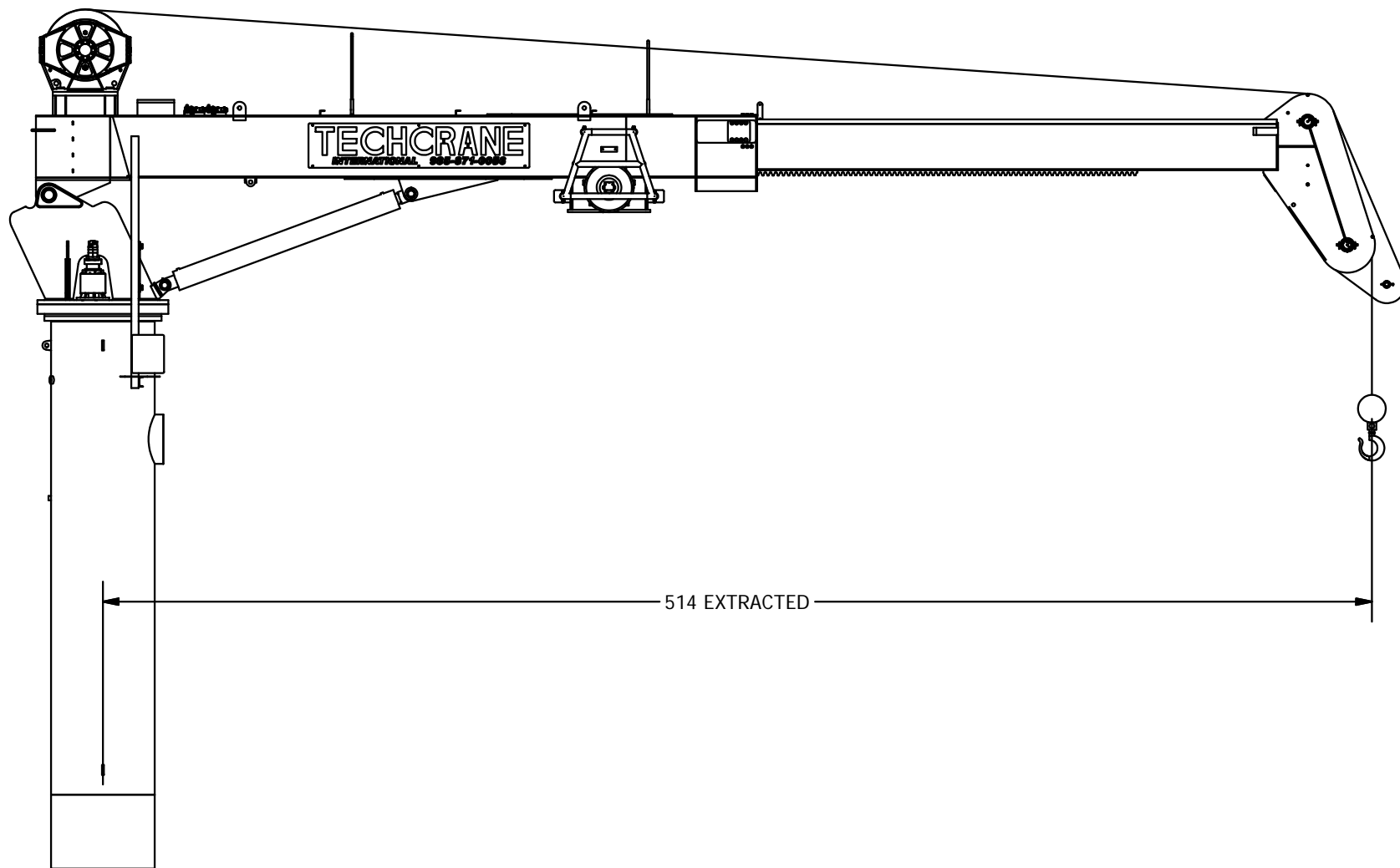
C

B

B

A

A



PART/DWG. NO.:

PRESENTATION

INFORMATION CONTAINED HEREON IS
CONFIDENTIAL AND TRADE SECRET
DO NOT DISCLOSE, USE OR REPRODUCE
WITHOUT PRIOR WRITTEN APPROVAL
FROM TECHCRANE INTERNATIONAL LLC.

UNLESS OTHERWISE SPECIFIED
ALL DIMENSIONS ARE IN INCHES
[] INDICATES MILLIMETERS

TOLERANCES

FRACTIONAL DIMENSIONS $\pm \frac{1}{16}$ 0
SURFACE FINISHES 125V

DESIGNED BY:

F. SHAD

DRAWN BY:

lbaylis

WEIGHT:

N/A

APPROVED BY:

FILE NAME:

P:\01 - SERIES CRANES - PRODUCTION DRAWINGS - MODEL PARTS\T30-25-42\T30-25-42\SWIFTSIPS.DWG # 12867-12868

MATERIAL NOTES:

1. BURN PER DIMENSIONS SHOWN.
2. PLATE FLATNESS AFTER BURNING TO BE
WITHIN ASTM SPECIFICATIONS.
3. REFER TO API SPEC 2C LATEST EDITION.
4. WHERE APPLICABLE - ROLL FORM PER
DIMENSIONS SHOWN.
5. WHERE APPLICABLE - TACK WELD AS
REQUIRED TO SECURE ROLLED CAN.

DESIGN STATE:

WorkInProgress

MATERIAL:

**TECHCRANE INTERNATIONAL, LLC.**

17639 HARD HAT DRIVE COVINGTON, LA. 70435 U.S.A.
PHONE (985) 871-0056 FAX (985) 871-0065

T30-25-42 GENERAL ARRANGEMENT
SWIFTSIPS JOB # 12867-12868

DATE:

4/22/2015

REVISION NO.:

2.2

SHEET 3 OF 6

4

3

2

1

A

4

3

2

1

D

D

C

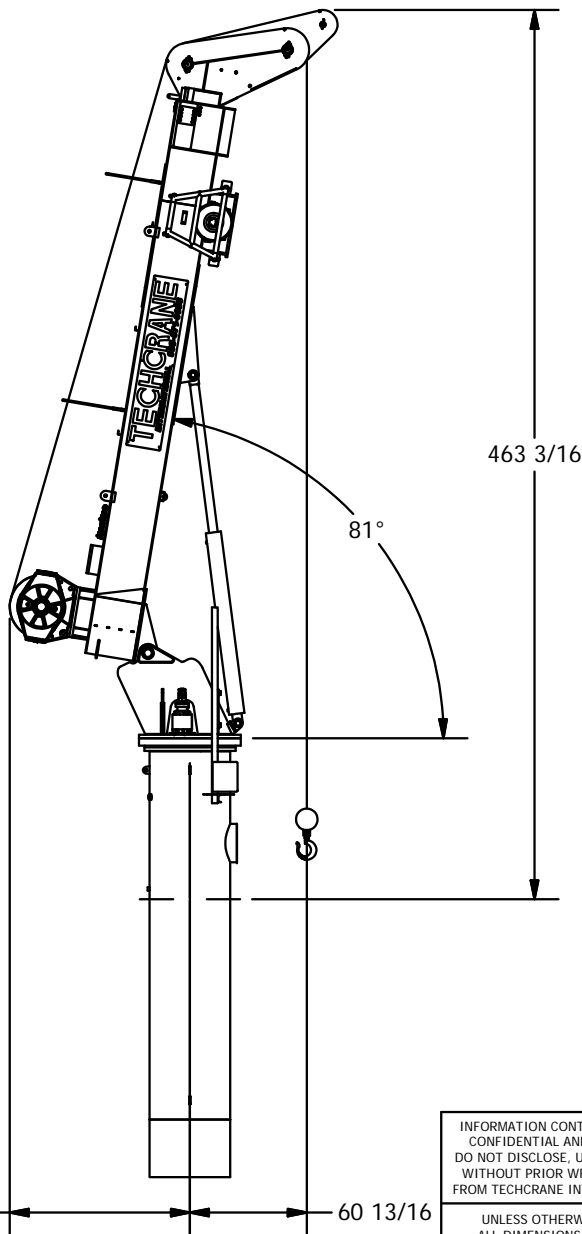
C

B

B

A

A



BOOM UP RETRACTED

PART/DWG. NO.:

PRESENTATION

INFORMATION CONTAINED HEREON IS
CONFIDENTIAL AND TRADE SECRET
DO NOT DISCLOSE, USE OR REPRODUCE
WITHOUT PRIOR WRITTEN APPROVAL
FROM TECHCRANE INTERNATIONAL LLC.

UNLESS OTHERWISE SPECIFIED
ALL DIMENSIONS ARE IN INCHES
[] INDICATES MILLIMETERS

TOLERANCES

FRACTIONAL DIMENSIONS $\pm \frac{1}{16}$ / -0
SURFACE FINISHES 125V

DESIGNED BY:

F. SHAD

DRAWN BY:

lbaylis

WEIGHT:

N/A

APPROVED BY:

FILE NAME:

P:\010 - SERIES 300000 - PRODUCTION DRAWINGS - MODEL 001\T010-25-42\T010-25-42\SWIFTSIPS.DWG # 12867-12868.dwg

MATERIAL NOTES:

1. BURN PER DIMENSIONS SHOWN.
2. PLATE FLATNESS AFTER BURNING TO BE WITHIN ASTM SPECIFICATIONS.
3. REFER TO API SPEC 2C LATEST EDITION.
4. WHERE APPLICABLE - ROLL FORM PER DIMENSIONS SHOWN.
5. WHERE APPLICABLE - TACK WELD AS REQUIRED TO SECURE ROLLED CAN.

DESIGN STATE:

WorkInProgress

MATERIAL:



TECHCRANE INTERNATIONAL, LLC.

17639 HARD HAT DRIVE COVINGTON, LA. 70435 U.S.A.
PHONE (985) 871-0056 FAX (985) 871-0065

**T30-25-42 GENERAL ARRANGEMENT
SWIFTSIPS JOB # 12867-12868**

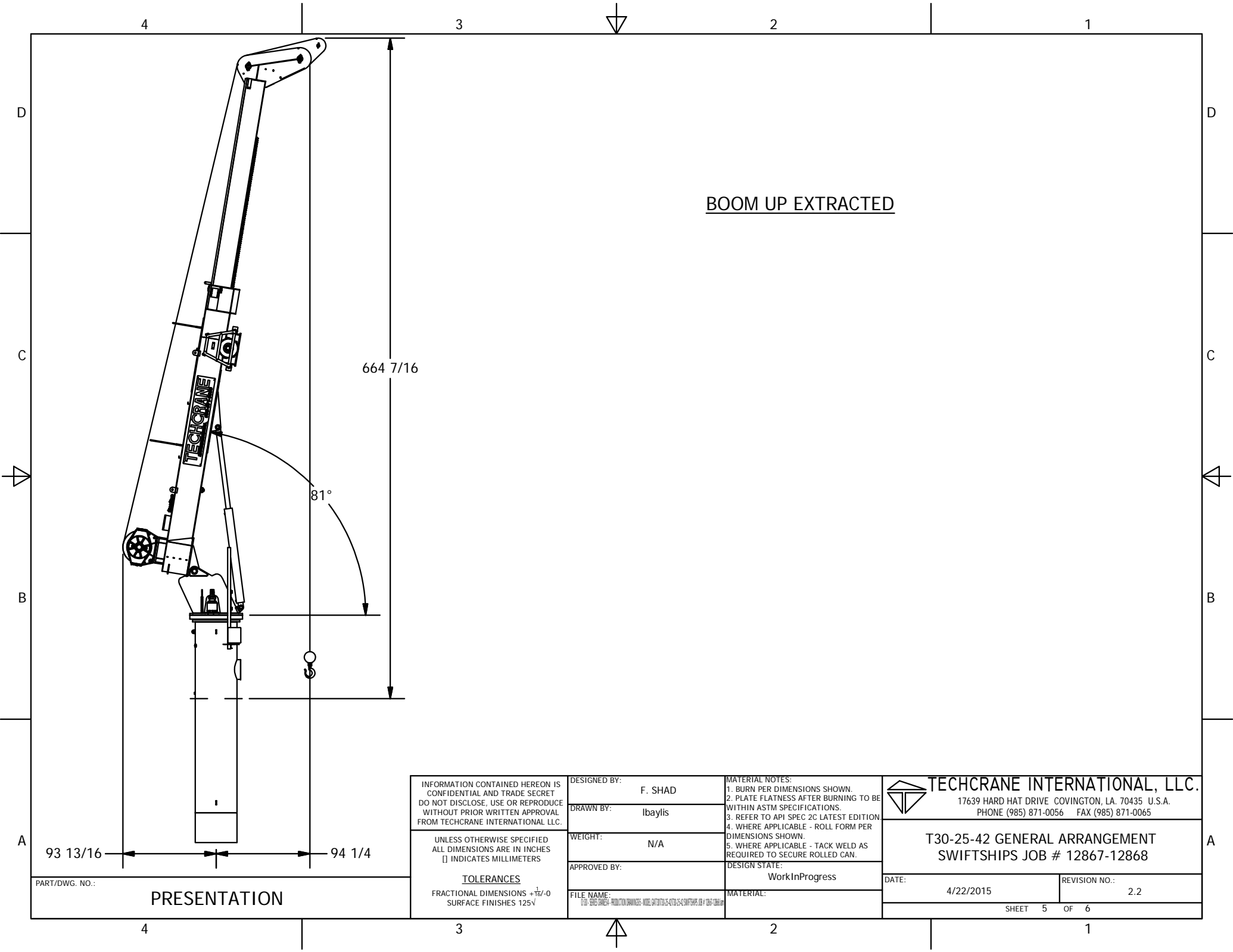
DATE:

4/22/2015

REVISION NO.:

2.2

SHEET 4 OF 6



BOOM UP EXTRACTED

664 7/16

81°

93 13/16 94 1/4

INFORMATION CONTAINED HEREON IS
CONFIDENTIAL AND TRADE SECRET
DO NOT DISCLOSE, USE OR REPRODUCE
WITHOUT PRIOR WRITTEN APPROVAL
FROM TECHCRANE INTERNATIONAL LLC.

UNLESS OTHERWISE SPECIFIED
ALL DIMENSIONS ARE IN INCHES
[] INDICATES MILLIMETERS

TOLERANCES

FRACTIONAL DIMENSIONS +1/16/-0
SURFACE FINISHES 125√

DESIGNED BY:

F. SHAD

DRAWN BY:

lbaylis

WEIGHT:

N/A

APPROVED BY:

FILE NAME:

\\\\010-\\SERIES\\CRANE\\4- PRODUCTION DRAWINGS- MODEL\\DWG\\T30-25-42\\T30-25-42\\SWIFTSIPS.DWG # 12867-12868.dwg

MATERIAL NOTES:

1. BURN PER DIMENSIONS SHOWN.
2. PLATE FLATNESS AFTER BURNING TO BE WITHIN ASTM SPECIFICATIONS.
3. REFER TO API SPEC 2C LATEST EDITION.
4. WHERE APPLICABLE - ROLL FORM PER DIMENSIONS SHOWN.
5. WHERE APPLICABLE - TACK WELD AS REQUIRED TO SECURE ROLLED CAN.

DESIGN STATE:

WorkInProgress

MATERIAL:



TECHCRANE INTERNATIONAL, LLC.

17639 HARD HAT DRIVE COVINGTON, LA. 70435 U.S.A.
PHONE (985) 871-0056 FAX (985) 871-0065

**T30-25-42 GENERAL ARRANGEMENT
SWIFTSIPS JOB # 12867-12868**

DATE:

4/22/2015

REVISION NO.:

2.2

SHEET 5 OF 6

PART/DWG. NO.:

PRESENTATION

4

3

2

1

D

D

C

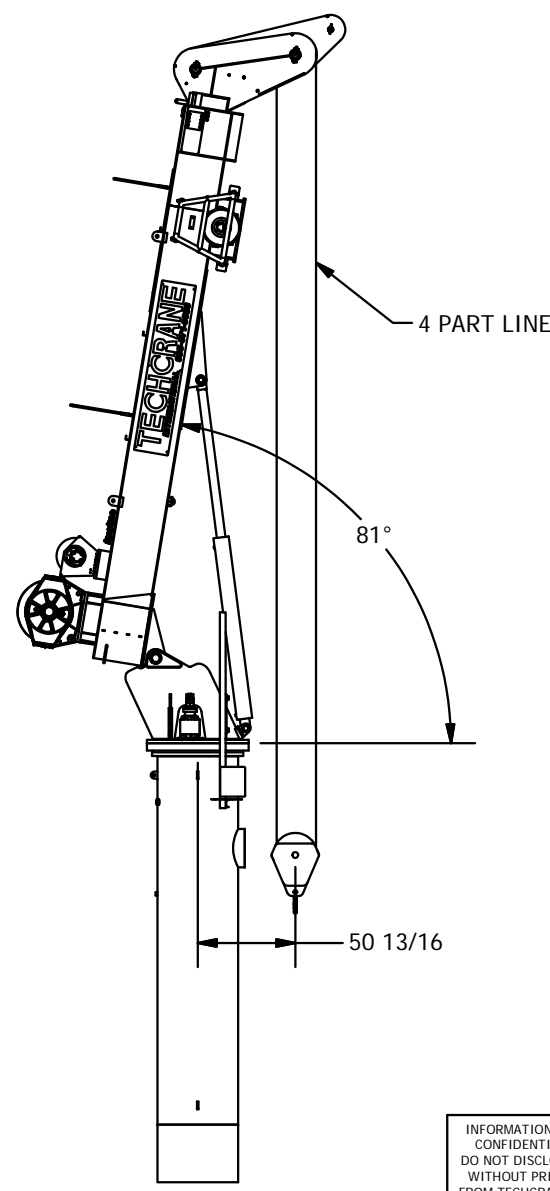
C

B


B

A

A



TEST CONFIGURATION ONLY
TO LIFT 40 TONS
FOR TESTING ONLY
NORMAL REEVING IS SINGLE PART LINE

INFORMATION CONTAINED HEREON IS CONFIDENTIAL AND TRADE SECRET DO NOT DISCLOSE, USE OR REPRODUCE WITHOUT PRIOR WRITTEN APPROVAL FROM TECHCRANE INTERNATIONAL LLC.	DESIGNED BY: F. SHAD	MATERIAL NOTES: 1. BURN PER DIMENSIONS SHOWN. 2. PLATE FLATNESS AFTER BURNING TO BE WITHIN ASTM SPECIFICATIONS. 3. REFER TO API SPEC 2C LATEST EDITION 4. WHERE APPLICABLE - ROLL FORM PER DIMENSIONS SHOWN. 5. WHERE APPLICABLE - TACK WELD AS REQUIRED TO SECURE ROLLED CAN.	 TECHCRANE INTERNATIONAL, LLC. 17639 HARD HAT DRIVE COVINGTON, LA. 70435 U.S.A. PHONE (985) 871-0056 FAX (985) 871-0065	
	DRAWN BY: lbaylis			
UNLESS OTHERWISE SPECIFIED ALL DIMENSIONS ARE IN INCHES [] INDICATES MILLIMETERS	WEIGHT: N/A	DESIGN STATE: WorkInProgress	T30-25-42 GENERAL ARRANGEMENT SWIFTSHIPS JOB # 12867-12868	
	APPROVED BY:			
<u>TOLERANCES</u> FRACTIONAL DIMENSIONS +1/16/-0 SURFACE FINISHES 125√	FILE NAME: C:\01-SEAL-DRUMS-4- PRODUCTION DRAWINGS- MODEL 040101010-42010-42-SWIFTSHIPS JOB # 12867-12868.dwg	MATERIAL:	DATE: 4/22/2015	REVISION NO.: 2.2
	SHEET 6 OF 6			

PART/DWG. NO.:
PRESENTATION

4

3

2

1