

(3) 252 SWING
GEARBOXES

HYDRAULIC POWER UNIT
DUAL 100 HP MOTOR
400 GALLON TANK

[R3041] TAILSWING RADIUS

ANTI-TWO BLOCKING MECHANISM

STANDARD OPERATOR'S CAB

ACCESS LADDER

NOTES:

1. THE INFORMATION PROVIDED IN THIS DOCUMENT IS INTENDED FOR INFORMATIONAL PURPOSES ONLY AND IS SUBJECT TO CHANGE WITHOUT NOTICE.
2. WEIGHT SHOWN IS APPROXIMATE AND DOES NOT INCLUDE WELD, WIRE ROPE, HARDWARE AND MISCELLANEOUS PARTS.

(2) TELESCOPIC GEARBOXES

MAIN WINCH

AUX. WINCH

(3) 7 X 80 CYLINDERS

20" MANWAY

TECHCRANE
INTERNATIONAL 888-874-0060

LOAD BLOCK
OVERHAUL BALL

[1611]
[1275]

[610]

[3069]

[16815]

[1031]

[1219] O.D.
W/ [19] WALL

INFORMATION CONTAINED HEREON IS
CONFIDENTIAL AND TRADE SECRET
DO NOT DISCLOSE, USE OR REPRODUCE
WITHOUT PRIOR WRITTEN APPROVAL
FROM TECHCRANE INTERNATIONAL LLC.

UNLESS OTHERWISE SPECIFIED
ALL DIMENSIONS ARE IN INCHES
[] INDICATES MILLIMETERS
TOLERANCES

FRACTIONAL DIMENSIONS $+\frac{1}{16}/-0$
SURFACE FINISHES 125 $\sqrt{}$

FILE NAME:
C:\Work\Design\PARTS\9999\GA\T0060-56-100 GENERAL ARRANGEMENT.dwg

DESIGNED BY:

F. SHAD

DRAWN BY:

lbaylis

WEIGHT:

57636 lbmass

APPROVED BY:

SEE APPROVAL STAMP

DESIGN STATE:

WorkInProgress

MATERIAL NOTES:

1. ALL NDE TO BE IN ACCORDANCE AND CALIBRATED TO AWS D1.1.
2. BURN PER DIMENSIONS SHOWN.
3. PLATE FLATNESS AFTER BURNING TO BE WITHIN ASTM SPECIFICATIONS.
4. REFER TO API SPEC 2C LATEST EDITION.
5. WHERE APPLICABLE - ROLL FORM PER DIMENSIONS SHOWN.
6. WHERE APPLICABLE - TACK WELD AS REQUIRED TO SECURE ROLLED CAN.

MATERIAL:



TECHCRANE INTERNATIONAL, LLC.

17639 HARD HAT DRIVE COVINGTON, LA. 70435 U.S.A.
PHONE (985) 871-0056 FAX (985) 871-0065

T60-56-100 GENERAL ARRANGEMENT

DATE:

9/27/2016

REVISION NO.:

3.0

CO NO.:

SHEET 1 OF 4

PART/DWG. NO.:

T0060-56-100-GA

4

3

2

1

D

D

C

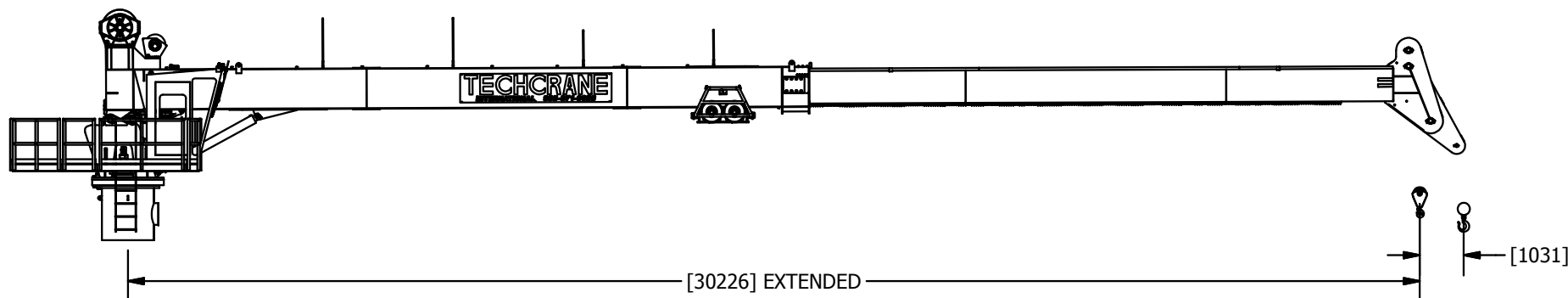
C

B

B

A

A



PART/DWG. NO.:

T0060-56-100-GA

INFORMATION CONTAINED HEREON IS
CONFIDENTIAL AND TRADE SECRET
DO NOT DISCLOSE, USE OR REPRODUCE
WITHOUT PRIOR WRITTEN APPROVAL
FROM TECHCRANE INTERNATIONAL, LLC.

UNLESS OTHERWISE SPECIFIED
ALL DIMENSIONS ARE IN INCHES
[] INDICATES MILLIMETERS
TOLERANCES

FRACTIONAL DIMENSIONS $+\frac{1}{32}/-0$
SURFACE FINISHES 125 $\sqrt{}$

FILE NAME:
C:\Work\DESIGNS\1 PARTS\9999\GA\T0060-56-100 GENERAL ARRANGEMENT.dwg

DESIGNED BY:

F. SHAD

DRAWN BY:

lbaylis

WEIGHT:

57636 lbmass

APPROVED BY:

SEE APPROVAL STAMP

DESIGN STATE:

WorkInProgress

MATERIAL NOTES:

1. ALL NDE TO BE IN ACCORDANCE AND
CALIBRATED TO AWS D1.1.
2. BURN PER DIMENSIONS SHOWN.
3. PLATE FLATNESS AFTER BURNING TO BE
WITHIN ASTM SPECIFICATIONS.
4. REFER TO API SPEC 2C LATEST EDITION.
5. WHERE APPLICABLE - ROLL FORM PER
DIMENSIONS SHOWN.
6. WHERE APPLICABLE - TACK WELD AS
REQUIRED TO SECURE ROLLED CAN.

MATERIAL:



TECHCRANE INTERNATIONAL, LLC.

17639 HARD HAT DRIVE COVINGTON, LA. 70435 U.S.A.
PHONE (985) 871-0056 FAX (985) 871-0065

T60-56-100 GENERAL ARRANGEMENT

DATE:

9/27/2016

REVISION NO.:

3.0

CO NO.:

SHEET 2 OF 4

4

3

2

1

D

D

C

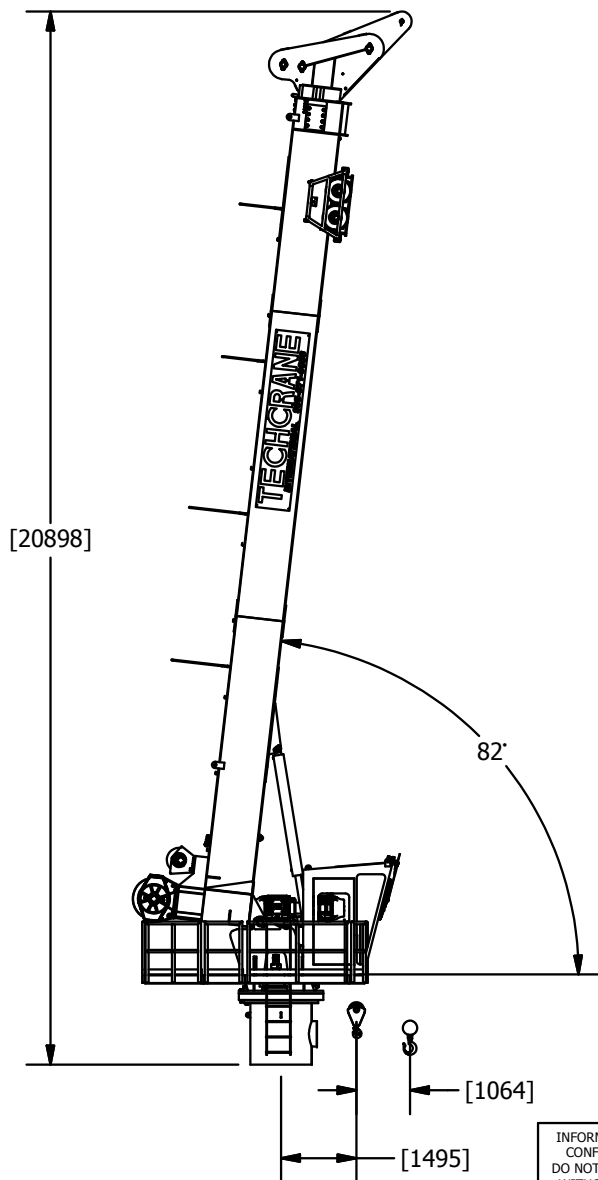
C

B

B

A

A



PART/DWG. NO.:

T0060-56-100-GA

INFORMATION CONTAINED HEREON IS
CONFIDENTIAL AND TRADE SECRET
DO NOT DISCLOSE, USE OR REPRODUCE
WITHOUT PRIOR WRITTEN APPROVAL
FROM TECHCRANE INTERNATIONAL, LLC.

UNLESS OTHERWISE SPECIFIED
ALL DIMENSIONS ARE IN INCHES
[] INDICATES MILLIMETERS
TOLERANCES

FRACTIONAL DIMENSIONS $+\frac{1}{16}/-0$
SURFACE FINISHES 125 $\sqrt{}$

FILE NAME:
C:\Work\DESIGNS\1 PARTS\99999\GA\T0060-56-100 GENERAL ARRANGEMENT.dwg

DESIGNED BY:

F. SHAD

DRAWN BY:

lbaylis

WEIGHT:

57636 lbmass

APPROVED BY:

SEE APPROVAL STAMP

DESIGN STATE:

WorkInProgress

MATERIAL NOTES:

1. ALL NDE TO BE IN ACCORDANCE AND
CALIBRATED TO AWS D1.1.
2. BURN PER DIMENSIONS SHOWN.
3. PLATE FLATNESS AFTER BURNING TO BE
WITHIN ASTM SPECIFICATIONS.
4. REFER TO API SPEC 2C LATEST EDITION.
5. WHERE APPLICABLE - ROLL FORM PER
DIMENSIONS SHOWN.
6. WHERE APPLICABLE - TACK WELD AS
REQUIRED TO SECURE ROLLED CAN.

MATERIAL:



TECHCRANE INTERNATIONAL, LLC.

17639 HARD HAT DRIVE COVINGTON, LA. 70435 U.S.A.
PHONE (985) 871-0056 FAX (985) 871-0065

T60-56-100 GENERAL ARRANGEMENT

DATE:

9/27/2016

REVISION NO.:

3.0

CO NO.:

SHEET 3 OF 4

4

3

2

1

4

3

2

1

D

D

C

C

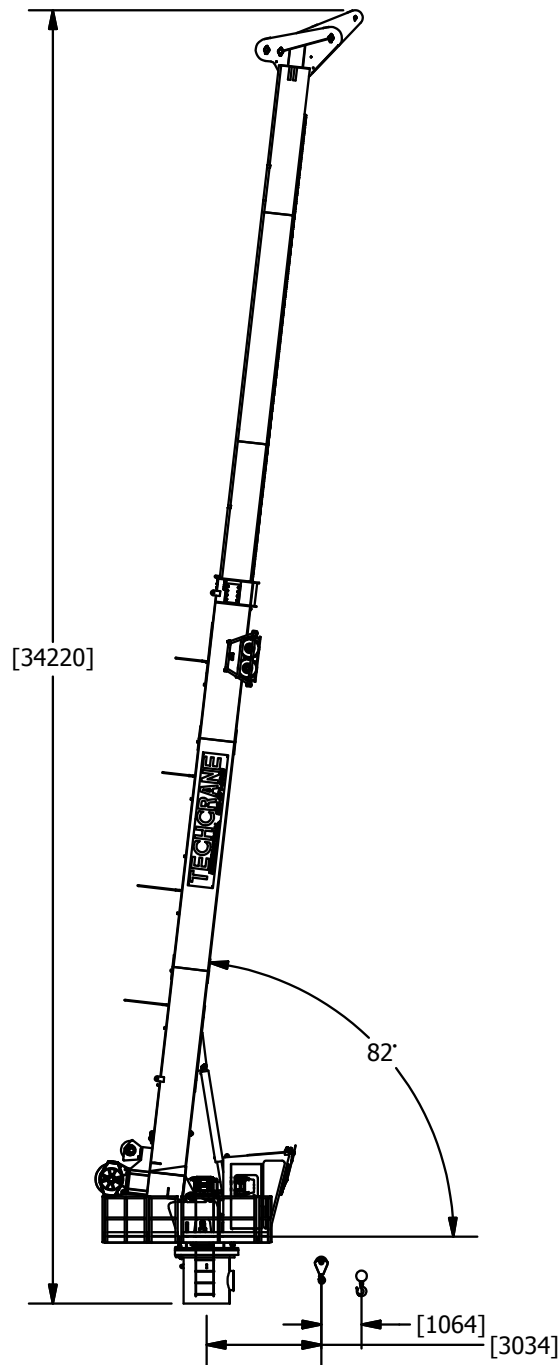
B

B

A

A

BOOM UP EXTENDED VIEW



PART/DWG. NO.:

T0060-56-100-GA

INFORMATION CONTAINED HEREON IS
CONFIDENTIAL AND TRADE SECRET
DO NOT DISCLOSE, USE OR REPRODUCE
WITHOUT PRIOR WRITTEN APPROVAL
FROM TECHCRANE INTERNATIONAL LLC.

UNLESS OTHERWISE SPECIFIED
ALL DIMENSIONS ARE IN INCHES
[] INDICATES MILLIMETERS
TOLERANCES

FRACTIONAL DIMENSIONS $+1/32/-0$
SURFACE FINISHES 125✓

FILE NAME:
C:\Work\DESIGNS\1 PARTS\9999\GA\T0060-56-100 GENERAL ARRANGEMENT.dwg

DESIGNED BY:

F. SHAD

DRAWN BY:

lbaylis

WEIGHT:

57636 lbmass

APPROVED BY:

SEE APPROVAL STAMP

DESIGN STATE:

WorkInProgress

MATERIAL NOTES:

1. ALL NDE TO BE IN ACCORDANCE AND
CALIBRATED TO AWS D1.1.
2. BURN PER DIMENSIONS SHOWN.
3. PLATE FLATNESS AFTER BURNING TO BE
WITHIN ASTM SPECIFICATIONS.
4. REFER TO API SPEC 2C LATEST EDITION.
5. WHERE APPLICABLE - ROLL FORM PER
DIMENSIONS SHOWN.
6. WHERE APPLICABLE - TACK WELD AS
REQUIRED TO SECURE ROLLED CAN.

MATERIAL:



TECHCRANE INTERNATIONAL, LLC.

17639 HARD HAT DRIVE COVINGTON, LA. 70435 U.S.A.
PHONE (985) 871-0056 FAX (985) 871-0065

T60-56-100 GENERAL ARRANGEMENT

DATE:

9/27/2016

REVISION NO.:

3.0

CO NO.:

SHEET 4 OF 4